

taste buds

chef Larry Janes



Fabulous pretenders cut costs

What started out to be an April Fool's column on "fake foods" has taken on a new angle. Although it's true that the Ritz Cracker Mock Apple Pie and "city chicken on-a-stick" were invented during the Great Depression to help stretch food dollars, a recent grocery store walk-through has pinpointed many "fake" foods.

Whereas many of these mock foods were invented for health's sake (i.e., imitation sour cream and Egg Beaters) many of the other so-called fabulous fakes were introduced so that folks like you and me can get more for the ever-shrinking food dollar.

One of the top 1980s pretenders is a product called Krab with a "k" instead of a "c." This product, still growing in popularity, used what was once called "trash fish" that when harvested in deep-sea nets was usually thrown back.

CONSISTING MAINLY of pollack, this imitation crab is processed, artificially flavored and colored and then molded into sticks that when tasted, actually resembles crabmeat. With Alaskan King Crab selling way over \$10 per pound, this imitation crab was an immediate hit, especially when introduced around \$4 per pound with a taste that was almost indistinguishable. The popularity of imitation crab has since spawned a market for fake lobster and even fake shrimp.

John and Marge Shimpel of Troy, both cruising in their golden years, recall products like city chicken with fond memories. Marge says that her momma used to buy the pork and veal combo on a stick for 19 cents per pound in the days following the Depression.

"This was certainly a budget-stretcher that when served with homemade dumplings and a vegetable 'put up' from the family garden made for a wondrous meal" said Marge. John recalls a meat market in southwest Detroit that used to make a mock city chicken (how about that — a fake of a fake!) that was rumored to be made of horse meat.

Another product that was not as well received as city chicken and mock apple pie was the 1950s introduction of imitation processed cheese. Products like Velveeta and sliced imitation cheese found their way into cost-conscious kitchens promising great taste, versatility and a price that couldn't be beat.

TO THIS day, momma still has the ever-present box of Velveeta available for everything from grilled cheese sandwiches to sauces. Made more of oil, water, colorings and flavorings, the mock cheese market blossomed and is still continuing strong, with domestic cheese prices on a dollar-for-dollar basis bringing today's food shopper a bargain compared to prices of yesteryear.

If there ever was a buzzword for great-tasting imitations of 1990s foods, just glance at the mayonnaise and salad dressing shelves in the grocery store. Although these products are far from being imitation, now there are jars sprouting claims of no cholesterol and even no fat.

Imitation products abound in the "diet" section, where low-calorie products mocking creamed soups and snacks abound. Geared toward the more health-conscious consumer, these products are marketed to improve brand loyalty and to heighten the awareness of good dietary habits.

So if you remember the days of grocery cost-cutting and rent parties, you might be surprised about the fabulous fakes that are out there on your grocers' shelves and meat cases.

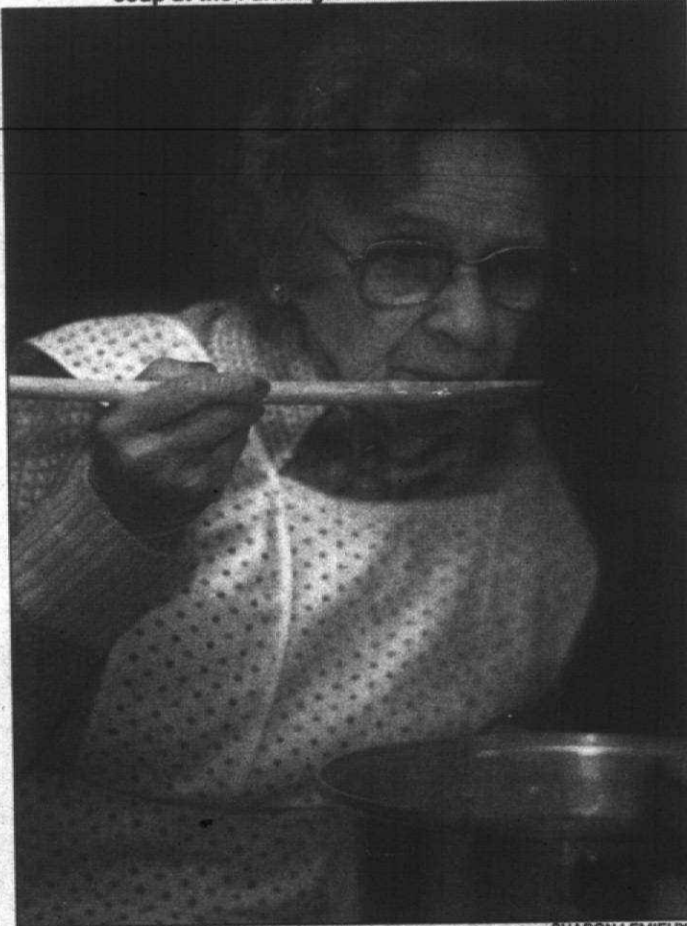
In all honesty though, I still feel guilty after eating a big bowl full of "imitation ice milk," especially when slathered with imitation chocolate topping.

See recipes inside.



SHARON LEMIEUX/staff photographer

Ruth Moehliman, president of the Farmington Historical Society, helps Adaline Wixom Jamieson of Farmington Hills make a pot of vegetable soup at the Farmington Historical Museum, Warner Mansion.



SHARON LEMIEUX

Adaline Wixom Jamieson tastes the vegetable soup to see if it needs more seasoning

Foods that fool Improvise during hard times

Weathering the recession, worsened by the auto sales slump and planned closing of the Willow Run assembly plant in Ypsilanti, is not easy, but we'd like to help. Over the next few weeks, we'll look at ways to stretch your food dollar. Next week, we'll talk about ways to cut your grocery bill.

Impact on the suburbs:

The shrinking
Auto Industry

By Keely Wygonik
staff writer

HAVE SOME fun on April Fool's Day, and cut your grocery bill too with some money-saving ideas from people who grew up and raised families during the Great Depression.

During these tough times, which began in 1929 and lasted through the 1930s, people learned how to make do with less, recycle leftovers and substitute when certain foods were not available or were too expensive.

Marion Kuclo of Garden City, known by many as Gundella the Kitchen Witch, remembers raspberry jam made with green tomatoes, sugar and a three-ounce package of raspberry jello.

For advice, homemakers often listened to Aunt Sammy on the radio. Her program, which aired from 1926

to 1944, offered recipes and tips for using new contraptions like refrigerators, which replaced ice boxes.

Rita Spence of Livonia remembers "lots of meatless meals. My mom made great dumplings. Give her a bag of flour and some salt and she could feed an army."

Even today, Spence "improvises." She doesn't throw old clothes away, but cuts them up for rags and saves the buttons for another use. A roll of paper towel lasts a long time because she prefers to use rags that can be washed and reused.

JOSEPHINE SEPIN of Garden City remembers a dish her mother made with elbow macaroni, pork and beans and onions.

"We made a lot of soup, they used to give away soup bones," she said.

The marrow in the bone made a rich broth. Dr. Miles Medical Company of Toledo, Ohio, offered this recipe for soup from bones in his 1925 cookbook:

"Dry celery leaves, keep to use in soup. Save bones from meat, crack large ones. Cover with cold water, cook slowly for several hours, strain, add vegetables, tomatoes, onion, celery, put in rice or barley, cook until done."

When Helen McGeorge's grandchildren visit her in Garden City, they often ask for "Poor Man's Gravy." It was sometimes served on a biscuit without meat.

"You boil potatoes, then fry your meat like hamburgers or porkchops. Take the meat out, pour potato water into meat drippings, thicken it with flour," she said.

"Everyone canned back then," said McGeorge. "You could buy five pounds of hamburger for less than \$1. We ate a lot of rice, too. There was some good food back then, believe it or not."

DOROTHY METZER of Garden City remembers eating potato soup with dumplings before payday. Even today, she's careful not to waste food. She cuts celery and onion and puts it in containers in the freezer for soup so it won't spoil. She'll buy an off brand instead of a name brand because it's usually cheaper and tastes just as good.

Please turn to Page 2

Little changes can add up to big savings, nutritious meals

By Keely Wygonik
staff writer

Eating good doesn't have to be expensive. With a little bit of planning and work, you can prepare low cost nutritious meals your family will enjoy.

"We typically eat too much meat," said Linda DeVore, registered dietitian at St. Mary Hospital in Livonia. "One pound of meat, raw weight, no bone is four servings. Limit serving sizes to two to three ounces cooked weight, about the size of a deck of cards. Serve twice a day, three if pregnant."

Protein needs can also be met with eggs. "Four yolks a week is the American Heart Association recommendation," said DeVore. "Discard the yolks if you have a cholesterol problem. People are afraid of eggs, but there's no need to be, they're a good source of protein. One egg equals one protein serving."

One cup of legumes such as soybeans, chickpeas, navy beans, pinto beans, kidney beans, lima beans, split peas and lentils can be used for one protein serving. "It's best to combine them with grains such as rice, wheat, pasta, and corn," said DeVore. "Two tablespoons peanut butter also equal one protein serving."

There's no secret to good eating. "Choose foods from the basic four food groups — milk, meat, fruit-vegetable and grain everyday," said DeVore.

FROM THE milk group, which includes yogurt and cheese, adults need two servings, children

three, teens, young adults and pregnant women need four. Examples of serving size are one cup milk, one cup yogurt, 1 ounce cheese, ¼ cup cottage cheese.

Four servings a day are recommended for everyone from the fruit and vegetable group. Examples are ¼ cup juice, ½ cup vegetable, ¼ grapefruit, 1 medium apple, banana, orange, ¼ cup dried fruit.

Four servings a day from the grain group are also recommended. Examples are one slice bread, ¼ English muffin, ½ cup cooked pasta, rice, cooked cereal, one tortilla, roll, muffin.

To lower costs, purchase lower cuts of meat like pot roast and round steak. Cook them slowly with moisture, pot roasting, braising, simmering or stewing to tenderize them. Tougher cuts can also be tenderized by marinating.

BUY A whole chicken or turkey, cook and use leftovers in soups, casseroles, stirfry, salads and sandwiches. Lunch meat is expensive.

Lois Theileke of the Oakland County Cooperative Extension Service, recommends stocking your pantry so you'll have beans, rice, pasta, and other items on hand to make meals in a hurry without having to run to the store. Buy the lower-priced family pack of meat and divide it into smaller packages to freeze.

For more nutrition information, call the Oakland County Cooperative Extension Service, 858-0897 or Dial-A-Dietitian, 875-1087.

See recipe inside.



JIM JAGOFELD/staff photographer

Linda DeVore, a registered dietitian at St. Mary Hospital in Livonia, presents Bean-A-Ghetti, a low cost, nutritious entrée. Serve with whole grain bread, fresh fruit and milk.

Celebrate April Fools' Day with mock foods

See related story on Taste front.

TOPFU EGG SALAD (makes 1 serving)
4 ounces firm tofu
2 tablespoons green onions, chopped
2 tablespoons celery, chopped
2 tablespoons fat-free mayonnaise
2 teaspoons dill pickle relish
1 teaspoon prepared mustard
1/4 teaspoon turmeric
In a mixing bowl, smash tofu with a fork until it has a coarse texture. Add remaining ingredients and mix until blended. Allow to chill in refrigerator overnight for flavors to blend.
Each serving provides 2 protein, 1/2 vegetable, 24 optional calories.
Source: Weight Watchers Recipe File

SOUTHWESTERN BEAN BURGERS (makes 2 servings, 2 burgers each)
6 ounces drained canned white kidney (cannellini) beans, mashed
1 cup mild salsa, divided
1/4 cup plain dried bread crumbs
1 tablespoon minced fresh cilantro (Chinese parsley) or Italian (flat-leaf) parsley
Dash hot sauce
1/4 ounce reduced-fat Cheddar cheese, shredded
In medium mixing bowl combine beans, 1/4 cup salsa, the bread crumbs, cilantro, and hot sauce. Shape into 4 equal patties. Wrap patties and refrigerate until firm, about 30 minutes.
Spray 12-inch non-stick skillet with non-stick cooking spray and heat; add patties and cook over medium heat until browned, about 5 minutes on each side.
To serve, top each burger with an equal amount of the remaining salsa and the cheese.
Each serving provides: 2 protein, 1 vegetable, 1 bread, 30 optional calories.
Source: Simply Light Cooking from the Kitchens of Weight Watchers, 1991.

MOCK FRIED OYSTERS
You can use either canned or frozen corn for this, but kernels cut from freshly shucked cobs taste much better.
2 large eggs
2 cups corn kernels (about 4 large ears)
3 tablespoons flour
Dash of salt
Freshly ground black pepper to taste oil for deep frying
Separate the eggs, placing the whites in a small bowl. Using a very sharp knife, cut kernels from ears of corn, saving any juice. If you are using canned corn, drain first.
In a medium bowl, combine egg yolks, corn and juice, flour, salt, and pepper. Stir until well mixed. Beat egg whites until stiff, and fold into corn mixture.
Heat oil to 375 degrees and drop corn batter by spoonfuls into it. Fry until golden brown (about 3 minutes), turning once. Serve hot. Makes about 12 "oysters."
From: Gundella — Kitchen Witch

MOCK PECAN PIE
3 eggs
1 cup sugar
2 1/2 tablespoons flour
1 cup dark corn syrup
1 teaspoon vanilla
1/2 cup melted butter
Place chopped green beans in bowl of a food processor. Sauté chopped onion in oil over low heat until dark, but not burned. Using a slotted spoon, remove onions, reserving oil. Add browned onions to beans in processor. Also add eggs, nuts and coloring.
Process until smooth, using a steel blade. Add salt and pepper to taste. If mixture seems too dry for spreading, stir in reserved oil. Chill before serving.
From: Gundella — Kitchen Witch

MOCK CHOPPED LIVER
Who will guess the secret ingredient in this recipe is really green beans?

1 pound fresh green beans, cooked, drained and chopped
2 large onions, chopped
3 tablespoons oil
4 hard-boiled eggs, peeled
1/2 cup chopped walnuts or peanuts
1 tablespoon glycol coloring, such as Kitchen Bouquet
Salt and pepper to taste
Place chopped green beans in bowl of a food processor. Sauté chopped onion in oil over low heat until dark, but not burned. Using a slotted spoon, remove onions, reserving oil. Add browned onions to beans in processor. Also add eggs, nuts and coloring.
Process until smooth, using a steel blade. Add salt and pepper to taste. If mixture seems too dry for spreading, stir in reserved oil. Chill before serving.
From: Gundella — Kitchen Witch

1 cup rolled oats
1/2 cup flaked coconut
1 unbaked pie shell
Beat eggs until foamy. Add sugar gradually until well blended. Add flour, corn syrup, vanilla, butter, oats and coconut, and stir well. Pour into pie shell and bake at 350 degrees Fahrenheit until done.
From: Gundella — Kitchen Witch

Krab appetizer, city chicken popular fakes

See Larry Jones' taste buds column on Taste front.

KRAB FLORENTINE
1 package (10 oz.) frozen chopped spinach
1 cup sliced mushrooms
2 tablespoons butter
2 tablespoons flour
1 teaspoon garlic salt
1/4 teaspoon pepper
1/4 cup dry sherry
1/2 cup milk
1 cup sour cream
Unwrap and flake krab. Defrost spinach, drain and press out all water. Sauté mushrooms in butter. Blend in flour, garlic, salt, pepper, sherry and milk. Stir in sour cream, spinach and krab. Cook, stirring constantly until mixture boils and thickens. Spoon into 4 individual shells or baking ramekins and top with Swiss chard. Thread veal cubes on 6 skewers. Sprinkle with salt and pepper. Combine egg and water. Dip skewered veal into egg wash and roll in seasoned breadcrumbs. Heat oil in a skillet. Brown skewered veal well on all sides. Add chicken broth, cover and simmer 30 minutes until tender. Thicken pan juices with a little flour dissolved in milk for a great pan gravy. Serves 6.

HOME MADE CITY CHICKEN
1 cup grated swiss cheese
Unwrap and flake krab. Defrost spinach, drain and press out all water. Sauté mushrooms in butter. Blend in flour, garlic, salt, pepper, sherry and milk. Stir in sour cream, spinach and krab. Cook, stirring constantly until mixture boils and thickens. Spoon into 4 individual shells or baking ramekins and top with Swiss chard. Thread veal cubes on 6 skewers. Sprinkle with salt and pepper. Combine egg and water. Dip skewered veal into egg wash and roll in seasoned breadcrumbs. Heat oil in a skillet. Brown skewered veal well on all sides. Add chicken broth, cover and simmer 30 minutes until tender. Thicken pan juices with a little flour dissolved in milk for a great pan gravy. Serves 6.

new products

CALL IT VEGGY!
Call It Veggy! is a spicy new pasta sauce by World of Mouth Foods, Inc. in Plymouth. It's loaded with vegetables and made from all natural ingredients. The homemade sauce was developed by Jack and Kristina Trabe, owners of a butcher shop in Plymouth. If you like salsa, you'll love this sauce. It's available in 16 and 32 ounce sizes at Kroger and Jacobson's. Suggested retail price is \$2.99 and \$3.99.

NEW MARKET
George Amblagian and family, owners and operators of the West-

SAVE NOW ON PIONEER BRAND SUGARS

Helping a Healthy Lifestyle Taste Better since 1906

Should you trust your favorite recipe to anything else?

MANUFACTURERS COUPON
Save 15¢ on any size Pioneer Light Brown or Powdered Sugar
EXPIRES MAY 31, 1992

TO DEALER: As our agent, we will pay you the face value of this coupon plus 20¢ extra handling when you receive it from a consumer purchasing the specified product. No other sale is allowed. Proof of sufficient purchases to cover the coupons submitted must be provided upon request. All coupons may be voided. Cash redemption value 1/100 cent. Additional redemption rules are one coupon per purchase. For payment, mail to: MICHIGAN SUGAR COMPANY • P.O. Box 1348 Saginaw, MI 48605

HOUSE OF BLINDS and More

FREE SHOP-AT-HOME FREE INSTALLATION
WITH PURCHASE OF \$349 OR MORE

CALL NOW 326-7100
FREE Estimates

Custom Made VERTICAL BLINDS UP TO 80% OFF
PVC VINYL "NEW" RIDGEWAY White CURVED Ivory CURVED Off White CURVED White

IN-STOCK DOORWALL SPECIAL!

MINI & MICRO BLINDS UP TO 80% OFF

WOOD BLINDS UP TO 50% OFF

WESTLAND 6556 WAYNE RD. 326-7100
FREE SHOP-AT-HOME CALL 326-7100

The pulse of your community

Bob's Farm Market
421-0710
31210 West Warren • Westland Merri-Warren Shopping Center
Mon.-Sat. 9-7 Sun. 10-6
Prices Effective March 30-April 5, 1992

Your Local Fresh MEAT, DELI, SEAFOOD, FRUIT & VEGETABLE STORE

U.S.D.A. Western Grain Fed Beef
Whole • BONELESS
NEW YORK STRIP LOIN
\$2.99 lb.
Sliced Free, wrapped in 1 pkg. only.
Additional non-sale meat dept. purchase.

Dearborn Sausage Co. S.S.D. HAMS
Wholesome, Smokeless, Delicately Cured
WHOLE.....\$1.89 lb.
HALF.....\$2.19 lb.

TURKEY 89¢ lb.
Grade A Fresh • BONELESS BUTTERFLY PORK CHOPS \$2.79 lb.
Grade A Fresh • ROLLED BONELESS • CENTER CUT PORK LOIN ROAST \$2.69 lb.

TUESDAY & WEDNESDAY ONLY
March 31 & April 1
Our Super Lean HAMBURGER Made From **GROUND SIRLOIN** \$1.59 lb.
Quick-N-Easy • Oven Ready BONELESS • STUFFED PORK CHOPS \$2.59 lb.

Bob's Lenten Seafood Special
Fresh Farm Raised **CATFISH FILLETS** \$3.99 lb.
Bob's Super Deli Special 99¢ FAT FREE **Butterball CHICKEN BREAST** \$1.99 lb. Limit 3 lbs.
Bob's Deli Special Domestic **BOILED HAM** \$1.69 lb. Limit 3 lbs.
Bob's Lenten Cheese Special Daily Fresh **CO-JACK CHEESE** \$1.99 lb.
Baked Fresh Daily In-Store **SUB BUNS** 5¢/1.00

Grade A Fresh CHICKEN DRUM STIX 10¢ Limit 30
Bob's Lenten Seafood Special Peel-N-Eat SHRIMP 10¢ each

Southern Rhone wines an excellent value

Chardonnay and cabernet sauvignon are fashionable wines; so are the wines of Bordeaux, Burgundy and Champagne. Rhone wines are not fashionable in the same sense, but they are recognized by connoisseurs as some of the world's best values. Single-handedly, author Robert Parker may have increased the fashionability of Rhone wines in the United States. For several years, he glowingly praised the wines of several Rhone estates in his bimonthly periodical "The Wine Advocate." He furthered the reputation of several Rhone producers in his book, "The Wines of the Rhone Valley and Provence," Simon and Schuster (\$22.95). Kermit Lynch, a wine retailer and importer based in Berkeley, Calif., is responsible for introducing Rhone wines to an expanding number of small, artisan winemakers in California. Lynch's book "Adventures on the Wine Route," Farrar, Straus and Giroux (\$19.95), gave readers an insider's view of several of the Rhone's superior producers.



focus on wine
Eleanor and Ray Heald

THE HOTTEST wines from California continue to be Rhone-style wines made from grapes originating in the Rhone Valley such as mourvèdre, syrah, cinsault, grenache, roussanne, marsanne and viognier. France's Rhone Valley runs south from Lyon to the Mediterranean Sea and is divided into two distinct sub-regions — north and south. The principal grape variety in the north is syrah. Although Americans are accustomed to identifying wines by the name of the wine's principal grape variety, red wines of the southern Rhone are blends of several grape varieties, grown in a warmer climate. They are softer and more approachable when young. Northern wines tend to be more muscular and tannic, with greater longevity.

Learning about the red wines of the southern Rhone requires a certain familiarity with the place names used to identify these wines. Cotes du Rhone (coat dew roh), Cotes du Rhone Villages (vee-lahj), Chateauneuf-du-Pape (shot-toe-nuff dew pop), Cotes du Ventoux (coat dew vaw-tooh), Vaucluse (va-kyay), and Gigondas (jhe-gone-das) are wines most frequently found in Michigan.

J.C. Mathes, a professor of technical writing at the University of Michigan in Ann Arbor, has also de-

veloped a fondness for the wines of the southern Rhone. Rather than write about his wine passion, he has established a small importing company, J & R Selections Ltd., specializing in southern Rhone wines.

MATHES spends vacation periods and sabbaticals living in the southern Rhone. He has an affection for several properties and their wines, and markets them in Michigan. His wines are selected from a cluster of excellent domaines whose vineyards extend from les Dentelles de Montmirail across le plan de Dieu to the stony slopes of Chateauneuf-du-Pape.

Because we are Rhone wine fans, we asked Mathes to let us taste through his wines and recommend our favorites in the Wine Selections of the Week. These wines represent excellent values. If you have yet to be introduced to Rhone Wines, you would be well advised to begin here. Mathes' selections can be found in many area wine shops.

1988 Cotes du Rhone Domaine de La Grange St Joseph (\$7.75) showcases black cherry, chocolate and cocoa aromas. It's spicy with good tannins, balanced acidity and an appealing peppery finish.

1986 Gigondas Cotes du Rhone Le Mas des Collines (\$13) is higher priced than the first two recommendations, but the extra dollars bring a complex wine with smoky, blueberry and violet accents. It's a rich, multi-dimensional mouthful with guts and flavor.

— A Guide to Origins. Robert W. Mayberry, Rowman and Littlefield (\$34.95). Mayberry is a professor of communications at Michigan's Grand Valley State University and one of the world's leading authorities on Rhone wines.

Tips for storing, using whole grains

AP — You've probably already baked with whole-wheat flour and cooked oats, but when was the last time you used buckwheat? Or how about the first time you leaped beyond wheat flour to cracked wheat, wheat bran or wheat berries?

A word to the wise before you stock up: Buy whole grains in small quantities. Because they contain the oil-rich germ, whole grains turn rancid faster. It's best to store them tightly covered, in a cool, dry place for no longer than five months. For longer storage, refrigerate or freeze grains, tightly covered, in moisture- and vaporproof containers. Just be sure to warm chilled whole grain flour to room temperature before adding to yeast bread recipes.

Barley: The polished kernels or seeds of the barley plant. Available in regular (pearl) and quick-cooking form, barley is most often used in soups and casseroles.

Bran: The fiber-rich outer covering of any grain kernel, such as oat, corn, rice or wheat (which is also known as miller's bran.) Substitute a spoonful or two for flour in baking.

Buckwheat Groats: Whole, unpolished buckwheat kernels, roasted or unroasted, often ground into buckwheat flour. Roasted kernels, called kasha, may be cooked and served as a breakfast cereal or a side dish. Buckwheat flour makes especially good pancakes.

Bulgur Wheat: Wheat kernels that have been cracked and precooked to cooking time. You can use bulgur for casseroles, cereals and salads, such as tabbouleh, a favorite in the Middle East.

Corneal: Ground and dried yellow, white or even blue corn kernels commonly used in American Indian, Mexican and colonial American cooking. Use corneal in traditional corn bread, tamales or mush (also known as hasty pudding in colonial days), or add it to yeast breads, waffles, muffins, dumplings or pasta dough.

Cracked Wheat: Coarsely ground unpolished wheat kernels that have not been precooked. Cracked wheat, which is interchangeable with bulgur, only it takes a little longer to cook.

Hominy: Yellow or white corn kernels that have been hulled, soaked and dried. Add hominy to salads and soups. Coarsely ground hominy is called hominy grits, which is cooked into the Southern breakfast favorite of the same name.

Oats: Regular rolled oats are unpolished oat kernels that have been steamed and flattened. Quick-cooking rolled oats are cut before steaming and flattening. Both forms may be used for cereal, cookies and breads, or can be ground into oat flour. Steel-cut oats, in which oat kernels that have been cut into lengthwise pieces; they may be used for hot cereal.

Wheat Germ: The soft, oily portion of the wheat kernel. Add a spoonful or two to baked goods or granola.

Wild Rice: Unpolished, dark brown, whole kernels from a marsh grass. Although wild rice is a grain, it is not a true member of the rice family.

for all your bakery needs... EVERYDAY:

Ackroyd's
SCOTTISH BAKEHOUSE
REDFORD BIRMINGHAM
2556 Five Mile Road 300 Hamilton
532-1181 540-5575

for all your bakery needs... EVERYDAY:

- Gift Baskets Special Orders
- Imported Specialty Foods
- Shepherds Pies
- Shortbread & Cookies
- Scotch Mince Pies
- Scottish Pastries
- Scones
- Cinnamon Rolls
- Bread
- Brownies
- Steak Pies

CHICKEN POT PIES
4 for 3⁹⁹

TUESDAY/WEDNESDAY SPECIAL
Pasties
4 for 3⁹⁹

Good Thru Saturday 4/4/92

Scramble up breakfast for three in a hurry

AP — Start your family's week-ends off better by scrambling up this tasty breakfast for three. Since the "deluxe" add-ons — mustard, herbs, mushrooms and pimiento — come ready to use, this recipe goes together superfast. To. It uses more egg whites than egg yolks and that makes it lower in fat and cholesterol.

SCRAMBLED EGGS DELUXE
4 eggs
4 egg whites
1/4 cup milk
1/4 teaspoon salt
1/4 teaspoon dry mustard
1/4 teaspoon dried basil, thyme or Italian seasoning, crushed
1/4 teaspoon pepper
One 4-ounce can sliced mushrooms, drained
2 tablespoons chopped pimiento
Non-stick spray coating
1/4 cup sliced green onion

In a medium mixing bowl combine eggs, egg whites, milk, salt, mustard, dried herb and pepper. Beat with a rotary beater, fork or whisk until mixed. Stir in the sliced mushrooms and pimiento; set aside.

Spray an 8-inch skillet with non-stick spray coating. Preheat the skillet over medium-high heat until a drop of water sizzles when added to the skillet. Add the green onion, cook about 1 minute or until tender.

Add the egg mixture to the skillet. Cook, without stirring, over medium heat until the mixture begins to set on the bottom and around the edge. Using a large spoon or spatula, lift

cooking calendar

TASSOS
Tassos Epicurean Cuisine Inc. offers a cooking class 6-8 p.m. Wednesday, April 8, at 6887 Orchard Lake Road in West Bloomfield. Call 339-0110 for reservations. Menu: marinated salmon with dill, stuffed Chicken Breast Renaissance, Sorbet with Sauterne. Cost \$25, includes dinner, wine, recipes.

KITCHEN GLAMOR
Elaine Caulfield offers lesson on working with sweet yeast doughs, European Easter bread, 1 and 7 p.m. Wednesday, April 1 in Redford, 1 and 7 p.m. Thursday, April 2 in West Bloomfield, 1 and 7 p.m. Friday, April 3 in Rochester. There is a \$3 fee. Call 537-1300.

Lee Bailey, author of "Cooking For Friends," visits Kitchen Glamor's West Bloomfield Kitchen, 11:30 a.m. Wednesday, April 1.

Giulliano Bugliatti visits Kitchen Glamor's West Bloomfield Kitchen with his "classic techniques" of Italian cooking, 6:30 p.m. Monday, April 6, Tuesday, April 7 and Wednesday, April 8. He will prepare three regional Italian menus. Cost is \$80 a class, \$225 for three-part series.

LAUREL PARK PLACE
Have your Cake and Eat it Too, 8:45-9:30 a.m. Monday, April 6, Gall Cox from Botford Hospital will discuss healthy ways to feed your sweet tooth in the Jacobson's Court area of Laurel Park Place Mall, at Six Mile and Newburg in Livonia.

BOB'S WEEKLY SPECIALS!

BOB SEZ: THE EASTER HOLIDAY is Only Three Weeks Away! It's time to order your **HAMS - RIB ROAST - CROWN ROAST, SMOKED and HOLIDAY SAUSAGE.** Call Us at 454-0111 For The Best! Thanks - Bob

U.S.D.A. Choice Beef Bone-In SIRLOIN STEAKS \$2.89 lb.
U.S.D.A. Choice Beef Center Cut • BONELESS ENGLISH ROAST \$1.78 lb.
U.S.D.A. Grade A Pork Loin HALF \$1.68 lb.
U.S.D.A. Choice Beef Center Cut PORK CHOPS \$2.29 lb.
U.S.D.A. Grade A Pork Loin RIB HALF \$1.49 lb.
U.S.D.A. Choice Beef Bone-In SIRLOIN STEAKS \$1.19 lb.
U.S.D.A. Choice Beef Center Cut PORK CHOPS \$2.29 lb.
U.S.D.A. Choice Beef Bone-In SIRLOIN STEAKS \$1.19 lb.
U.S.D.A. Choice Beef Center Cut PORK CHOPS \$2.29 lb.

2001 HAM \$2.99 lb. Low Salt • 93% Fat Free
Lipari's Creamy Muenster Cheese \$1.99 lb.
2001 HAM \$2.99 lb. Low Salt • 93% Fat Free
Lipari's Creamy Muenster Cheese \$1.99 lb.

U.S.D.A. Grade A Pork Loin HALF \$1.68 lb.
U.S.D.A. Choice Beef Center Cut PORK CHOPS \$2.29 lb.
U.S.D.A. Choice Beef Bone-In SIRLOIN STEAKS \$1.19 lb.
U.S.D.A. Choice Beef Center Cut PORK CHOPS \$2.29 lb.

U.S.D.A. Choice Beef Bone-In SIRLOIN STEAKS \$1.19 lb.
U.S.D.A. Choice Beef Center Cut PORK CHOPS \$2.29 lb.
U.S.D.A. Choice Beef Bone-In SIRLOIN STEAKS \$1.19 lb.
U.S.D.A. Choice Beef Center Cut PORK CHOPS \$2.29 lb.

U.S.D.A. Choice Beef Bone-In SIRLOIN STEAKS \$1.19 lb.
U.S.D.A. Choice Beef Center Cut PORK CHOPS \$2.29 lb.
U.S.D.A. Choice Beef Bone-In SIRLOIN STEAKS \$1.19 lb.
U.S.D.A. Choice Beef Center Cut PORK CHOPS \$2.29 lb.

U.S.D.A. Choice Beef Bone-In SIRLOIN STEAKS \$1.19 lb.
U.S.D.A. Choice Beef Center Cut PORK CHOPS \$2.29 lb.
U.S.D.A. Choice Beef Bone-In SIRLOIN STEAKS \$1.19 lb.
U.S.D.A. Choice Beef Center Cut PORK CHOPS \$2.29 lb.

U.S.D.A. Choice Beef Bone-In SIRLOIN STEAKS \$1.19 lb.
U.S.D.A. Choice Beef Center Cut PORK CHOPS \$2.29 lb.
U.S.D.A. Choice Beef Bone-In SIRLOIN STEAKS \$1.19 lb.
U.S.D.A. Choice Beef Center Cut PORK CHOPS \$2.29 lb.

U.S.D.A. Choice Beef Bone-In SIRLOIN STEAKS \$1.19 lb.
U.S.D.A. Choice Beef Center Cut PORK CHOPS \$2.29 lb.
U.S.D.A. Choice Beef Bone-In SIRLOIN STEAKS \$1.19 lb.
U.S.D.A. Choice Beef Center Cut PORK CHOPS \$2.29 lb.

U.S.D.A. Choice Beef Bone-In SIRLOIN STEAKS \$1.19 lb.
U.S.D.A. Choice Beef Center Cut PORK CHOPS \$2.29 lb.
U.S.D.A. Choice Beef Bone-In SIRLOIN STEAKS \$1.19 lb.
U.S.D.A. Choice Beef Center Cut PORK CHOPS \$2.29 lb.

U.S.D.A. Choice Beef Bone-In SIRLOIN STEAKS \$1.19 lb.
U.S.D.A. Choice Beef Center Cut PORK CHOPS \$2.29 lb.
U.S.D.A. Choice Beef Bone-In SIRLOIN STEAKS \$1.19 lb.
U.S.D.A. Choice Beef Center Cut PORK CHOPS \$2.29 lb.

U.S.D.A. Choice Beef Bone-In SIRLOIN STEAKS \$1.19 lb.
U.S.D.A. Choice Beef Center Cut PORK CHOPS \$2.29 lb.
U.S.D.A. Choice Beef Bone-In SIRLOIN STEAKS \$1.19 lb.
U.S.D.A. Choice Beef Center Cut PORK CHOPS \$2.29 lb.

U.S.D.A. Choice Beef Bone-In SIRLOIN STEAKS \$1.19 lb.
U.S.D.A. Choice Beef Center Cut PORK CHOPS \$2.29 lb.
U.S.D.A. Choice Beef Bone-In SIRLOIN STEAKS \$1.19 lb.
U.S.D.A. Choice Beef Center Cut PORK CHOPS \$2.29 lb.

U.S.D.A. Choice Beef Bone-In SIRLOIN STEAKS \$1.19 lb.
U.S.D.A. Choice Beef Center Cut PORK CHOPS \$2.29 lb.
U.S.D.A. Choice Beef Bone-In SIRLOIN STEAKS \$1.19 lb.
U.S.D.A. Choice Beef Center Cut PORK CHOPS \$2.29 lb.

U.S.D.A. Choice Beef Bone-In SIRLOIN STEAKS \$1.19 lb.
U.S.D.A. Choice Beef Center Cut PORK CHOPS \$2.29 lb.
U.S.D.A. Choice Beef Bone-In SIRLOIN STEAKS \$1.19 lb.
U.S.D.A. Choice Beef Center Cut PORK CHOPS \$2.29 lb.

U.S.D.A. Choice Beef Bone-In SIRLOIN STEAKS \$1.19 lb.
U.S.D.A. Choice Beef Center Cut PORK CHOPS \$2.29 lb.
U.S.D.A. Choice Beef Bone-In SIRLOIN STEAKS \$1.19 lb.
U.S.D.A. Choice Beef Center Cut PORK CHOPS \$2.29 lb.

U.S.D.A. Choice Beef Bone-In SIRLOIN STEAKS \$1.19 lb.
U.S.D.A. Choice Beef Center Cut PORK CHOPS \$2.29 lb.
U.S.D.A. Choice Beef Bone-In SIRLOIN STEAKS \$1.19 lb.
U.S.D.A. Choice Beef Center Cut PORK CHOPS \$2.29 lb.

U.S.D.A. Choice Beef Bone-In SIRLOIN STEAKS \$1.19 lb.
U.S.D.A. Choice Beef Center Cut PORK CHOPS \$2.29 lb.
U.S.D.A. Choice Beef Bone-In SIRLOIN STEAKS \$1.19 lb.
U.S.D.A. Choice Beef Center Cut PORK CHOPS \$2.29 lb.

U.S.D.A. Choice Beef Bone-In SIRLOIN STEAKS \$1.19 lb.
U.S.D.A. Choice Beef Center Cut PORK CHOPS \$2.29 lb.
U.S.D.A. Choice Beef Bone-In SIRLOIN STEAKS \$1.19 lb.
U.S.D.A. Choice Beef Center Cut PORK CHOPS \$2.29 lb.

U.S.D.A. Choice Beef Bone-In SIRLOIN STEAKS \$1.19 lb.
U.S.D.A. Choice Beef Center Cut PORK CHOPS \$2.29 lb.
U.S.D.A. Choice Beef Bone-In SIRLOIN STEAKS \$1.19 lb.
U.S.D.A. Choice Beef Center Cut PORK CHOPS \$2.29 lb.

U.S.D.A. Choice Beef Bone-In SIRLOIN STEAKS \$1.19 lb.
U.S.D.A. Choice Beef Center Cut PORK CHOPS \$2.29 lb.
U.S.D.A. Choice Beef Bone-In SIRLOIN STEAKS \$1.19 lb.
U.S.D.A. Choice Beef Center Cut PORK CHOPS \$2.29 lb.

U.S.D.A. Choice Beef Bone-In SIRLOIN STEAKS \$1.19 lb.
U.S.D.A. Choice Beef Center Cut PORK CHOPS \$2.29 lb.
U.S.D.A. Choice Beef Bone-In SIRLOIN STEAKS \$1.19 lb.
U.S.D.A. Choice Beef Center Cut PORK CHOPS \$2.29 lb.

U.S.D.A. Choice Beef Bone-In SIRLOIN STEAKS \$1.19 lb.
U.S.D.A. Choice Beef Center Cut PORK CHOPS \$2.29 lb.
U.S.D.A. Choice Beef Bone-In SIRLOIN STEAKS \$1.19 lb.
U.S.D.A. Choice Beef Center Cut PORK CHOPS \$2.29 lb.

U.S.D.A. Choice Beef Bone-In SIRLOIN STEAKS \$1.19 lb.
U.S.D.A. Choice Beef Center Cut PORK CHOPS \$2.29 lb.
U.S.D.A. Choice Beef Bone-In SIRLOIN STEAKS \$1.19 lb.
U.S.D.A. Choice Beef Center Cut PORK CHOPS \$2.29 lb.

U.S.D.A. Choice Beef Bone-In SIRLOIN STEAKS \$1.19 lb.
U.S.D.A. Choice Beef Center Cut PORK CHOPS \$2.29 lb.
U.S.D.A. Choice Beef Bone-In SIRLOIN STEAKS \$1.19 lb.
U.S.D.A. Choice Beef Center Cut PORK CHOPS \$2.29 lb.

U.S.D.A. Choice Beef Bone-In SIRLOIN STEAKS \$1.19 lb.
U.S.D.A. Choice Beef Center Cut PORK CHOPS \$2.29 lb.
U.S.D.A. Choice Beef Bone-In SIRLOIN STEAKS \$1.19 lb.
U.S.D.A. Choice Beef Center Cut PORK CHOPS \$2.29 lb.

U.S.D.A. Choice Beef Bone-In SIRLOIN STEAKS \$1.19 lb.
U.S.D.A. Choice Beef Center Cut PORK CHOPS \$2.29 lb.
U.S.D.A. Choice Beef Bone-In SIRLOIN STEAKS \$1.19 lb.
U.S.D.A. Choice Beef Center Cut PORK CHOPS \$2.29 lb.

U.S.D.A. Choice Beef Bone-In SIRLOIN STEAKS \$1.19 lb.
U.S.D.A. Choice Beef Center Cut PORK CHOPS \$2.29 lb.
U.S.D.A. Choice Beef Bone-In SIRLOIN STEAKS \$1.19 lb.
U.S.D.A. Choice Beef Center Cut PORK CHOPS \$2.29 lb.

U.S.D.A. Choice Beef Bone-In SIRLOIN STEAKS \$1.19 lb.
U.S.D.A. Choice Beef Center Cut PORK CHOPS \$2.29 lb.
U.S.D.A. Choice Beef Bone-In SIRLOIN STEAKS \$1.19 lb.
U.S.D.A. Choice Beef Center Cut PORK CHOPS \$2.29 lb.

U.S.D.A. Choice Beef Bone-In SIRLOIN STEAKS \$1.19 lb.
U.S.D.A. Choice Beef Center Cut PORK CHOPS \$2.29 lb.
U.S.D.A. Choice Beef Bone-In SIRLOIN STEAKS \$1.19 lb.
U.S.D.A. Choice Beef Center Cut PORK CHOPS \$2.29 lb.

U.S.D.A. Choice Beef Bone-In SIRLOIN STEAKS \$1.19 lb.
U.S.D.A. Choice Beef Center Cut PORK CHOPS \$2.29 lb.
U.S.D.A. Choice Beef Bone-In SIRLOIN STEAKS \$1.19 lb.
U.S.D.A. Choice Beef Center Cut PORK CHOPS \$2.29 lb.

U.S.D.A. Choice Beef Bone-In SIRLOIN STEAKS \$1.19 lb.
U.S.D.A. Choice Beef Center Cut PORK CHOPS \$2.29 lb.
U.S.D.A. Choice Beef Bone-In SIRLOIN STEAKS \$1.19 lb.
U.S.D.A. Choice Beef Center Cut PORK CHOPS \$2.29 lb.

U.S.D.A. Choice Beef Bone-In SIRLOIN STEAKS \$1.19 lb.
U.S.D.A. Choice Beef Center Cut PORK CHOPS \$2.29 lb.
U.S.D.A. Choice Beef Bone-In SIRLOIN STEAKS \$1.19 lb.
U.S.D.A. Choice Beef Center Cut PORK CHOPS \$2.29 lb.

U.S.D.A. Choice Beef Bone-In SIRLOIN STEAKS \$1.19 lb.
U.S.D.A. Choice Beef Center Cut PORK CHOPS \$2.29 lb.
U.S.D.A. Choice Beef Bone-In SIRLOIN STEAKS \$1.19 lb.
U.S.D.A. Choice Beef Center Cut PORK CHOPS \$2.29 lb.

U.S.D.A. Choice Beef Bone-In SIRLOIN STEAKS \$1.19 lb.
U.S.D.A. Choice Beef Center Cut PORK CHOPS \$2.29 lb.
U.S.D.A. Choice Beef Bone-In SIRLOIN STEAKS \$1.19 lb.
U.S.D.A. Choice Beef Center Cut PORK CHOPS \$2.29 lb.

U.S.D.A. Choice Beef Bone-In SIRLOIN STEAKS \$1.19 lb.
U.S.D.A. Choice Beef Center Cut PORK CHOPS \$2.29 lb.
U.S.D.A. Choice Beef Bone-In SIRLOIN STEAKS \$1.19 lb.
U.S.D.A. Choice Beef Center Cut PORK CHOPS \$2.29 lb.

U.S.D.A. Choice Beef Bone-In SIRLOIN STEAKS \$1.19 lb.
U.S.D.A. Choice Beef Center Cut PORK CHOPS \$2.29 lb.
U.S.D.A. Choice Beef Bone-In SIRLOIN STEAKS \$1.19 lb.
U.S.D.A. Choice Beef Center Cut PORK CHOPS \$2.29 lb.

U.S.D.A. Choice Beef Bone-In SIRLOIN STEAKS \$1.19 lb.
U.S.D.A. Choice Beef Center Cut PORK CHOPS \$2.29 lb.
U.S.D.A. Choice Beef Bone-In SIRLOIN STEAKS \$1.19 lb.
U.S.D.A. Choice Beef Center Cut PORK CHOPS \$2.29 lb.

U.S.D.A. Choice Beef Bone-In SIRLOIN STEAKS \$1.19 lb.
U.S.D.A. Choice Beef Center Cut PORK CHOPS \$2.29 lb.
U.S.D.A. Choice Beef Bone-In SIRLOIN STEAKS \$1.19 lb.
U.S.D.A. Choice Beef Center Cut PORK CHOPS \$2.29 lb.

U.S.D.A. Choice Beef Bone-In SIRLOIN STEAKS \$1.19 lb.
U.S.D.A. Choice Beef Center Cut PORK CHOPS \$2.29 lb.
U.S.D.A. Choice Beef Bone-In SIRLOIN STEAKS \$1.19 lb.
U.S.D.A. Choice Beef Center Cut PORK CHOPS \$2.29 lb.

U.S.D.A. Choice Beef Bone-In SIRLOIN STEAKS \$1.19 lb.
U.S.D.A. Choice Beef Center Cut PORK CHOPS \$2.29 lb.
U.S.D.A. Choice Beef Bone-In SIRLOIN STEAKS \$1.19 lb.
U.S.D.A. Choice Beef Center Cut PORK CHOPS \$2.29 lb.

U.S.D.A. Choice Beef Bone-In SIRLOIN STEAKS \$1.19 lb.
U.S.D.A. Choice Beef Center Cut PORK CHOPS \$2.29 lb.
U.S.D.A. Choice Beef Bone-In SIRLOIN STEAKS \$1.19 lb.
U.S.D.A. Choice Beef Center Cut PORK CHOPS \$2.29 lb.

U.S.D.A. Choice Beef Bone-In SIRLOIN STEAKS \$1.19 lb.
U.S.D.A. Choice Beef Center Cut PORK CHOPS \$2.29 lb.
U.S.D.A. Choice Beef Bone-In SIRLOIN STEAKS \$1.19 lb.
U.S.D.A. Choice Beef Center Cut PORK CHOPS \$2.29 lb.

U.S.D.A. Choice Beef Bone-In SIRLOIN STEAKS \$1.19 lb.
U.S.D.A. Choice Beef Center Cut PORK CHOPS \$2.29 lb.
U.S.D.A. Choice Beef Bone-In SIRLOIN STEAKS \$1.19 lb.
U.S.D.A. Choice Beef Center Cut PORK CHOPS \$2.29 lb.

U.S.D.A. Choice Beef Bone-In SIRLOIN STEAKS \$1.19 lb.
U.S.D.A. Choice Beef Center Cut PORK CHOPS \$2.29 lb.
U.S.D.A. Choice Beef Bone-In SIRLOIN STEAKS \$1.19 lb.
U.S.D.A. Choice Beef Center Cut PORK CHOPS \$2.29 lb.

U.S.D.A. Choice Beef Bone-In SIRLOIN STEAKS \$1.19 lb.
U.S.D.A. Choice Beef Center Cut PORK CHOPS \$2.29 lb.
U.S.D.A. Choice Beef Bone-In SIRLOIN STEAKS \$1.19 lb.
U.S.D.A. Choice Beef Center Cut PORK CHOPS \$2.29 lb.

U.S.D.A. Choice Beef Bone-In SIRLOIN STEAKS \$1.19 lb.
U.S.D.A. Choice Beef Center Cut PORK CHOPS \$2.29 lb.
U.S.D.A. Choice Beef Bone-In SIRLOIN STEAKS \$1.19 lb.
U.S.D.A. Choice Beef Center Cut PORK CHOPS \$2.29 lb.

U.S.D.A. Choice Beef Bone-In SIRLOIN STEAKS \$1.19 lb.
U.S.D.A. Choice Beef Center Cut PORK CHOPS \$2.29 lb.
U.S.D.A. Choice Beef Bone-In SIRLOIN STEAKS \$1.19 lb.
U.S.D.A. Choice Beef Center Cut PORK CHOPS \$2.29 lb.

U.S.D.A. Choice Beef Bone-In SIRLOIN STEAKS \$1.19 lb.
U.S.D.A. Choice Beef Center Cut PORK CHOPS \$2.29 lb.
U.S.D.A. Choice Beef Bone-In SIRLOIN STEAKS \$1.19 lb.
U.S.D.A. Choice Beef Center Cut PORK CHOPS \$2.29 lb.

U.S.D.A. Choice Beef Bone-In SIRLOIN STEAKS \$1.19 lb.
U.S.D.A. Choice Beef Center Cut PORK CHOPS \$2.29 lb.
U.S.D.A. Choice Beef Bone-In SIRLOIN STEAKS \$1.19 lb.
U.S.D.A. Choice Beef Center Cut PORK CHOPS \$2.29 lb.

U.S.D.A. Choice Beef Bone-In SIRLOIN STEAKS \$1.19 lb.
U.S.D.A. Choice Beef Center Cut PORK CHOPS \$2.29 lb.
U.S.D.A. Choice Beef Bone-In SIRLOIN STEAK

SPRING SPECIALS

One Week Only!
Factory Authorized Sale On AMERICAN DREW



5 pc. set reg. \$2849 SALE \$1999
 Night Stand \$279

Bedrooms reminiscent of Old World vineyard estates are yours with Vineyard Oaks, furniture crafted the old-fashioned way from fine oak solids, genuine oak veneers, and other selected hardwoods by American Drew. Vineyard Oaks reflects details found in the splendid Spring Mountain winery mansion in Napa Valley, California... known to TV viewers as Falcon Crest... from the popular CBS series. Vineyard Oaks is the best of the Old World for the New World. Capture that Old World feeling with New World Vineyard Oaks.

Falcon Crest™ is a trademark of Lorimar Productions

APRIL FOOL BUT NO FOOLING ON OUR PRICES

<p>ULTRA MAX STEEL RADIAL 35,000 Mile Limited Warranty</p> <p>ANY SIZE 4 for \$124.99</p> <p>ANY SIZE 4 for \$149.99</p> <p>ANY SIZE 4 for \$169.99</p>	<p>FREE BOAT & TRAILER TIRES</p> <p>Mounting, Balancing and Valve Stems W/Tire Purchase</p> <p>Expires 3-30-92</p>	<p>ALL SEASON STEEL RADIAL WHITEWALL 50,000 Mile Limited Warranty</p> <p>ANY SIZE 4 for \$159.99</p> <p>ANY SIZE 4 for \$189.99</p> <p>ANY SIZE 4 for \$214.99</p>
<p>50,000 MILE LIMITED WARRANTY Good wet and dry traction for smaller cars</p> <p>155R/12 \$24.95</p> <p>Sale Price</p> <p>155/R13 29.99 185/70R14 40.99 165/R13 34.99 195/70R14 44.99 175/70R13 36.99 205/70R14 49.99 185/70R13 39.99</p>	<p>TRAIL CLIMBER LIGHT TRUCK 50,000 Mile Limited Warranty Excellent All-Weather Traction</p> <p>235/75R15SL \$74.95</p> <p>Sale Price</p> <p>30x9.50R15 C 99.99 225/65R16 D 99.27 31x10.50R15 C 110.43 235/65R16 E 117.79 33x12.50R15 C 128.49 245/75R16 E 121.32 265/75R16 C 105.80</p>	<p>A/T TRUCK & RV RADIALS \$59.95</p> <p>235/75R15SL</p> <p>30x9.50R15/B \$79.99 31x10.50R15/B \$90.99 225/75R16/D \$77.99 235/85R16/D \$84.99 235/85R16/E \$93.99 245/75R16/E \$96.99 8.75/R16.5/D \$86.99 9.50R16.5/D \$96.99</p>

PROTECT YOUR INVESTMENT WITH OUR NATIONWIDE ROAD HAZARD WARRANTY - Ask for Details

SERVICE SPECIALS

<p>HEAVY DUTY SHOCKS/STRUTS Top of the line gas charged shocks. Improved handling and control without sacrificing comfort.</p> <p>Auto Gas SHOCKS \$19.99 Ea. Light Trucks Gas SHOCKS \$32.99 Ea. Gas CARTRIDGES (#83303) \$44.99 Ea.</p> <p>With coupon only. Not valid with any other offer or discount. Expires 4-11-92</p>	<p>WHEEL ALIGNMENT FREE Front Wheel Alignment. Reg. \$29.95. 2 or more tires. With coupon only. Not valid with any other offer or discount. Expires 4-11-92</p>	<p>OIL CHANGE FILTER & LUBE \$12.95 MOST CARS</p> <p>We remove your old oil and add up to 5 quarts of premium quality oil. Change oil if it's dirty. We also change your air filter and top up your car's coolant, brake & power fluids. Free oil filter. Expires 4-11-92</p>
<p>SPRING CAR CARE PACKAGE \$49.95</p> <p>Lube, Oil, Filter, Rotate/Balance, Alignment</p> <p>Expires 4-11-92</p>	<p>BRAKES \$49.95 MOST CARS</p> <p>Front Disc or Rear Drum</p> <p>From Disc or Rear Drum, New York, Tenn. Boost, Repair, Springs, Labor, Road Test, Noise, Pad, Shoes. \$10.00 coupon only. Not valid with any other offer or discount. Expires 4-11-92</p>	<p>SPARTAN TIRE Your Personal TIRE AND SERVICE CENTER</p> <p>Livonia Westland 29100 Plymouth Rd. 11722 Wayne Rd. 525-SAVE 595-6800</p> <p>Ypsilanti Ann Arbor 482-1182 994-4242</p>

Picture Yourself In **SELBY.**
 COMFORT FLEX

In a rough and tumble world it helps to be flexible. That's why Selby has designed the cushiony, all-day comfort and flexibility in our great-looking Comfort Flex shoes.

FASHION SHOES LIVONIA MALL
476-4500

Healthways of Plymouth

A NATURAL FOODS SUPERMARKET
 44427 Ann Arbor Rd. (at Sheldon, Kroger Shopping Center)
455-1440
 Mon.-Sat. 9:30-8:30, Sun. 11-4

<p>Do You Have Too Much Stress? Try Thompson VITAMIN B COMPLEX 20% OFF With Vitamin C 100's Reg. \$5.99 Now \$4.19</p>	<p>The Healthy Heart Multiple ORA PLUS VITAMIN/MINERAL HERB GLANDULAR 60% OFF Formulated For Circulation Reg. \$25.99 Now \$15.95</p>
<p>For Colds, Flu & Allergies Natrol ESTER C-500 BIOFLAVONOID TABS 27% OFF Exceptional Vitamin C Formula 90's Reg. \$8.95 Now \$6.50</p>	<p>Diet • Metabolism Aid TRYMTONE 1200 32% OFF Protein, Vitamin, Chromium Formula 120's Reg. \$18.95 Now \$12.95</p>
<p>An Effective Blood Cleanser Nature's Way CHAPARRAL HERB 34% OFF 100's Reg. \$7.49 Now \$4.95</p>	<p>For PMS Discomfort Schiff PMS SYSTEM 33% OFF Helps mood swings, bloating, pain & fatigue 2 Pack Reg. \$17.95 Now \$11.95</p>
<p>To Reduce Sugar Cravings Natrol CHROMATE 30% OFF Helps Balance High or Low Sugar Problems 90's Reg. \$9.95 Now \$6.95</p>	<p>Do You Need More Energy? Nature's Way KOREAN GINSENG 25% OFF All around body tonic 100's Reg. \$19.95 Now \$14.96</p>

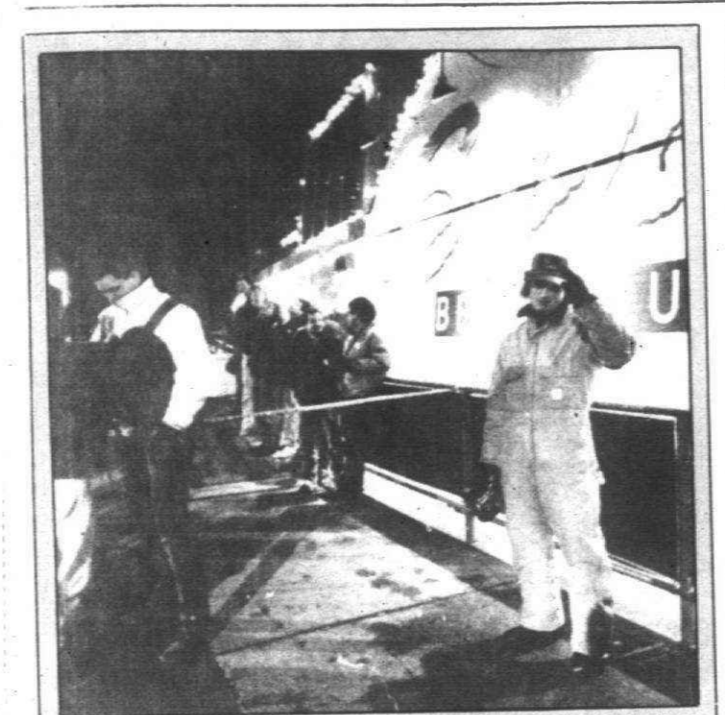
HEALTHWAYS COUPON, EXP. 4-10-92

AN ADDITIONAL **\$1.00 OFF** Purchases of \$15 or more with this ad. Excl. sales taxes. Can't be used with other coupons.

Healthways Tasting Fair & FREE Therapies
 • Indology • Mini Massage
SAT., APRIL 11, 11-4 P.M.

STREET SCENE

The Observer & Eccentric Newspapers



A suited-up Ron Austin signals a greeting while waiting for the next person to do a bungee jump promotion he set up for the Baja Club in Detroit.

Being seen pays off for Ron Austin

By Larry O'Connor staff writer

One cheese stick down and four to go. Some 1 1/2 hours later, a few dairy-produced deep fried bits remain on Ron Austin's plate.

The time is filled up talking about himself. There's plenty to talk about.

After all, how many people can say they've been run over by a 3,200-pound Jeep, had a tug-of-war with a 180-horsepower single engine airplane, towed a 30-ton riverboat while swimming and, yes, ran a marathon backwards.

Skydiving and bungee jumping, all of which Austin has done, seem passe by comparison.

Often, Austin has pulled off such daring feats in the name of charity, helped raise money for, such as the American Cancer Society and the American Heart Association.

The 1975 graduate of Garden City West High School is part Houdini, P.T. Barnum, Jack LaLaine and even Dr. Spock, dispensing advice for today's disenfranchised youth.

"If you stay in a group," he says, "you lose your identity."

ON THIS day, the stunt man is contemplating putting on a mock disaster drill to drum up publicity for one of his clients in his burgeoning public relations firm of Austin Public Relations.

His diverse roster of clients includes an athletic club, a real estate outfit and a couple of musical groups.

"I can get your attention," said Austin, who lives with his wife, Sheila in Franklin. "I can talk about anything."

In many ways, Austin is a throwback to the nostalgic days of public relations before the sound bites of TV news.

These acts of publicity would be designed to elicit a good photo opportunity that ask few questions.

His stunts have been chronicled in national publications like USA Today and the Wall Street Journal. Austin's methods make him somewhat a maverick in the often sterilized corporate PR world where faxes and power lunches are the norm.

But Austin's desire to be the focal point transcends the public relations business.

LISA FISCO, a producer of "Kelly & Co.," can usually count on a phone call from Austin. He's been a guest on the morning talk show for such topics as prenuptial agreements and male vanity.

"He calls when he sees a topic that intrigues him," Fisco said. "He says, 'I did that.'"

"I told him we were having a show on male vanity. He said, 'That fits me perfectly. I said, 'No kidding' hastens to add Austin's non-stop energy and sense of humor is rather refreshing.

"I don't know where he comes up with his ideas," she said. "He's so creative. He comes up with stuff I've never heard before."

Initially, Austin flirted with feats of endurance while at the YMCA in Williamsport, Pa. He remembers swimming an old loggins river for 15 miles in a benefit for the March of Dimes, including treacherous rapids for the last five.

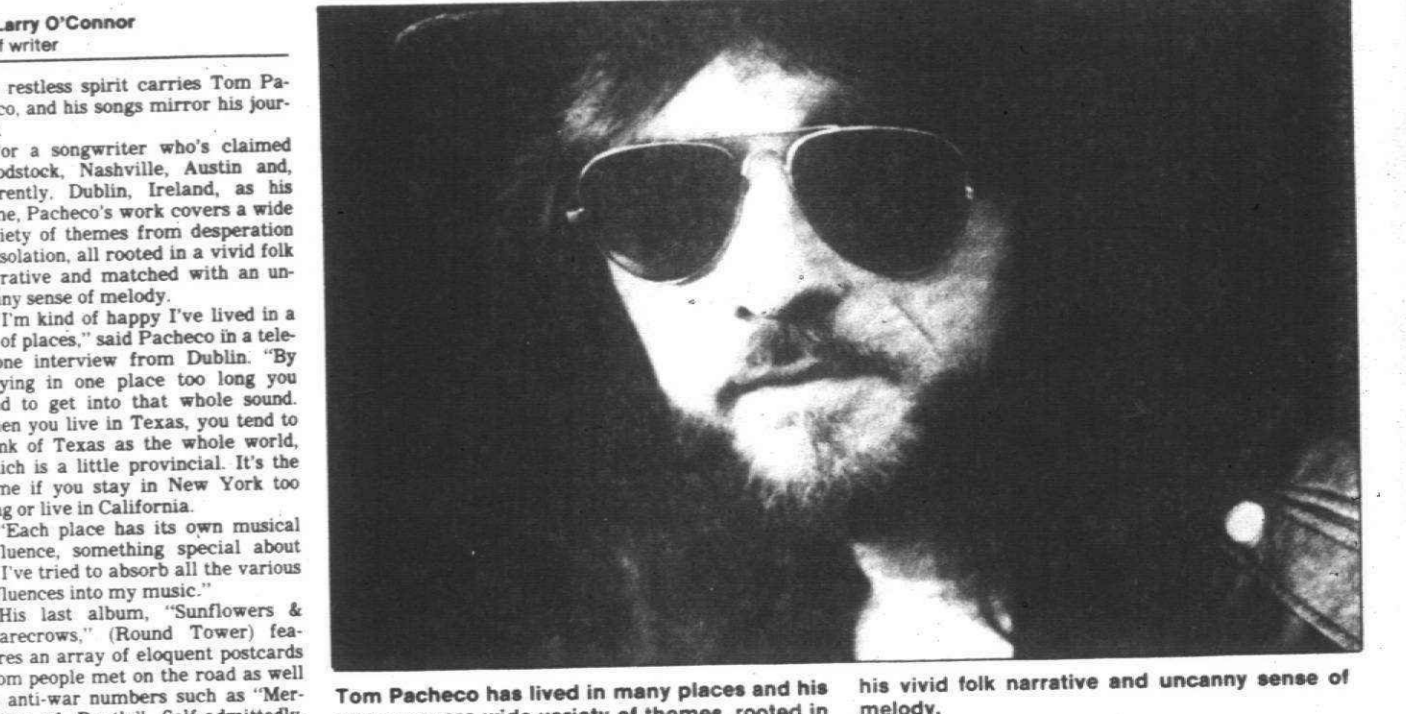
At the finish, there were 200 people to greet him.

"I started crying," he said. "There were all these people to welcome me. I thought, 'This feels good.'"

IT WAS so good, Austin refused to jump off.

Please turn to Page 6

Pacheco: Perfect musical match



By Larry O'Connor staff writer

A restless spirit carries Tom Pacheco, and his songs mirror his journey.

For a songwriter who's claimed Woodstock, Nashville, Austin and, currently, Dublin, Ireland, as his home, Pacheco's work covers a wide variety of themes from desperation to isolation, all rooted in a vivid folk narrative and matched with an uncanny sense of melody.

"I'm kind of happy I've lived in a lot of places," said Pacheco in a telephone interview from Dublin. "By staying in one place too long you tend to get into that whole sound. When you live in Texas, you tend to think of Texas as the whole world, which is a little provincial. It's the same if you stay in New York too long or live in California."

"Each place has its own musical influence, something special about it. I've tried to absorb all the various influences into my music."

His last album, "Sunflowers & Scarecrows," (Round Tower) features an array of eloquent postcards from people met on the road as well as anti-war numbers such as "Merchant of Death." Self-admittedly, Pacheco's effort was "overdone" in parts but aptly capturing the inspirational story/songwriting style he possesses.

AFTER HIS performance Friday, April 3, at the La Casa Folk Music Series in Birmingham Unitarian Church, Pacheco will fly to Nashville to record "Tales from the Red Lake."

Pacheco feels his third album (to be released in September) will be much like his first, "Eagle in the Rain," a critically acclaimed effort released in 1990 on Round Tower, cut to despair with "Robert & Ramona" and featuring his wry sense of embellishment with "Jesus in a Black Leather Jacket."

On his new album, there will be a tale of what became of the alleged second gunman in the Kennedy assassination, "Jessica Brown," and one rather unconventional narrative about a woman biker and a New York cop falling in love.

Marillion's durability. Hogarth, who replaced Fish in 1988, has a soft yearning singing style that puts an emotional attachment to his songs.

MANY NUMBERS on "Holidays in Eden" speak of voids and personal longing, which Hogarth said were culled from nearly three years of touring after the 1989 "Season's End" album.

"Half of the time, we seemed to be saying goodbye to people for months on end," said Hogarth, who wrote a majority of the numbers on the "Holidays in Eden." "I was trying to put my finger on it. I felt a bit dislocated spiritually. It was something nagging me."

Hogarth's vocal ability is somewhat easier to retract. Although he had no formal vocal training, he did sing in school choirs in his native England.

His singing here was John Lennon, who he hosts as a singer appealed to him more than the former Beatle's vocal range. Likewise, he gets the same "buzz" listening to REM's Michael Stipe and solo artist Michael Bolton.

His schooling in the rock arena included stints with English bands How We Live and Europeans before joining Marillion. The group already had established itself with several albums, including one under the band's original moniker of Silmarillion in 1983 "Script for a Jester's Tear."

Marillion made its American debut in 1985 with "Misplaced Childhood," which was both critically and commercially successful as a concept album featuring the hit single "Kayeleigh."

Hogarth had little trouble slipping in as a replacement for Fish, writing half of the songs for "Season's End." Fans seemingly accepted the change in frontmen as well.

Then again, Hogarth is a believable sort.

"If you stick a politician in front of a TV camera, you can tell if they're lying," Hogarth said. "Maybe it's something we should remember as people. You should look them in the eye and ask yourself, 'Can I believe this?'"

"I think people can generally tell if people are being honest or not."

Marillion will perform Friday, April 3, at the Ritz, 17580 Frachon, 10th Mile and Gratiot, Roseville. Tickets are \$5 advance, \$7 at the door. For information, call 778-8150.

Marillion is rocking with a message

By Larry O'Connor staff writer

Monday, March 30

- Bruce Cockburn With Sam Phillips at The Gem Theatre, 58 E. Columbia St., Detroit. Tickets are \$21.50 in advance. 996-5451
- Saurius Highway Rick's American Pub, 611 Church, Ann Arbor. 996-2747

Tuesday, March 31

- Ugly Stick With Cracker Box at Blind Pig, 208 S. First, Ann Arbor. 996-5555
- Jerry Sprague Rick's American Pub, 611 Church, Ann Arbor. 996-2747
- Sadao Watanabe The Ark, 637 1/2 S. Main, Ann Arbor. 761-1451

Wednesday, April 1

- Love Battery Blind Pig, 208 S. First, Ann Arbor. 996-5555

Thursday, April 2

- Rory Black The Ark, 637 1/2 S. Main St., Ann Arbor. 761-1800
- Tequila Mocking Birds Rick's Cafe, 611 Church, Ann Arbor. 996-2747
- Nath's Personal With Jonaseang at Hamtramck Pub, 2048 Caniff, off of I-75. 365-3929
- Grady Hazy With Bright Black at Lili's 21, 2930 Jacob, Hamtramck. 875-6555
- Detroit Blues Band Murdoch's, 2088 Crooks Road, north of M-59, Rochester Hills. 852-0550
- Southgoing Zak With Missionary Stew at the Blind Pig, 208 S. First, Ann Arbor. 996-5555
- Lonnie Brooks Rick's Cafe, 611 Church, Ann Arbor. 996-2747
- In Their Own Words With Midge Ure, Darden Smith, Chip Taylor, Rosie Flores and Don Henry at The Gem Theatre, 58 E. Columbia, Detroit. Tickets are \$18.50 in advance and \$21.50 at the door. 961-5451

Friday, April 3

- Tom Pacheco The Birmingham Unitarian Church, 651 N. Woodward, corner of Lone Pine and Woodward. Tickets are \$10 in advance, \$12 at the door. 996-2747
- Van Halen With Hardline at The Palace, 3 Championship Drive, Auburn Hills. Tickets are \$22.50 reserved. 377-0100
- Robert Earl Keen Jr. A Fiat Full of Chaos Todd's, 8130 E. Seven Mile Road, east of Van Dyke Road, Detroit. Admission is \$5. 366-6532
- Trash Bands With Poltergeist at Lili's 21, 2930 Jacob, Hamtramck. 875-6555
- Detroit Blues Band Murdoch's, 2088 Crooks Road, north of M-59, Rochester Hills. 852-0550
- The Samples Blind Pig, 208 S. First, Ann Arbor. 996-5555
- The Hunkies Rick's Cafe, 611 Church, Ann Arbor. 996-2747

Saturday, April 4

- Van Halen With Hardline at The Palace, 3 Cham-

CROSSWORD PUZZLER

ACROSS

1 — Van
2 Cleef
4 Tolls
9 In what
manner?
12 Unit of
energy
13 Item of
property
14 Arabian
garment
15 Musical
instruments
17 Alarm bell
19 Walk
21 Man's
nickname
22 Dress
accessory
25 Short sleep
27 Region
31 Beverage
32 Pennants
34 Agave plant
35 Hawaiian
wreath
36 Pinch

ANSWER TO PREVIOUS PUZZLE

CURIOUS LAIRS
ANIMAL COTTON
PA PROPOSE BE
EBB STEPS ABE
SLOW SAPP AVER
ERRS LESSER
RIOT RUIN
BOTTOM EDGE
LAW WAS EELS
ERS CAROL SAL
RET PARTNER TI
RETARD GAINED
SNORE SPODE

3-30 © 1992 United Feature Syndicate

3 Urge on
4 Strain for
breath
5 Indispens-
able
6 Equally
7 Permit to
8 Portico

9 Possesses
10 Kimono sash
11 Pale
12 Hard-wood
tree
13 Holding
device
20 Equality
21 Glossy
material
23 Place in a
straight
position
24 Compass
point
26 Pierce
28 Concerning
29 Muse of
poetry
30 Showy flower
32 Dry, as wine
33 Succor
35 Boundaries
39 Fulfill
40 Make lace
41 Machine loved
by Zeus
44 Fondle
46 Army meal
48 Emloys
49 Study
50 Beam
51 DDE
52 Health resort
54 Antlered
animal
55 Female ruff
56 Negative vote
59 Tag player

1	2	3	4	5	6	7	8	9	10	11
12	13	14	15	16	17	18	19	20	21	22
23	24	25	26	27	28	29	30	31	32	33
34	35	36	37	38	39	40	41	42	43	44
45	46	47	48	49	50	51	52	53	54	55
56	57	58	59	60	61	62	63	64	65	66

Compliments of The Birmingham-Bloomfield Board of Realtors®



315 Northville-Novl
PASSIVE SOLAR, SUPER INSULATED - 1500 sq. ft. cape cod, 2 1/2 bedrooms, 1 1/2 baths, full basement, 4th bedroom, 1 1/2 bath, full bath with shower, central air, 2 car garage \$269,500

316 Westland Garden City
A STEAL
All aluminum 3 bedroom ranch, 2 full baths plus two quarters with 4th bedroom, huge efficiency room with kitchen, appliances, garage, immediate occupancy \$59,900

Century 21
CASTELLI 525-7900
1990-91 CENTURION AWARD WINNING OFFICE

317 Redford
ANOTHER TEMPTING BUY!
Yard of 100' efficient compact kitchen, dining room opens to patio, three bedrooms upstairs, picture windowed living room. Priced at a modest \$47,900. F-151-E.R. Call 474-3303.

Century 21 DYNAMIC
728-8000
OR HER FAGER 610-0360

Westland & Area
Invest in happiness - outstanding 3 bedroom colonial, everything updated, move in condition, family room, fireplace, 1 1/2 baths, 2 car attached garage & finished basement. All appliances included \$95,900.

Century 21 - Dynamic
728-8000

Westland
DON'T BE A POOL
Pick up that phone in your apartment when you're throwing rent down the drain, and see just how easy and with how little money you can get into this 3 bedroom brick ranch with a basement and 2 1/2 car garage. 474-5700

GARDEN CITY
SUMMER FUN
With an inground pool, 3 bedrooms, 2 1/2 baths, family room, there's central air, a finished basement, newer vinyl windows, and a 2 1/2 car garage. 421-5680

Westland
LIVONIA SCHOOLS
Opportunity knocks for this home near on the market. Cheerful brick ranch with finished basement, central air, 2 full baths, and garage. 421-5680

GORGEOUS
4 bedrooms and family room, Florida room, newer furnace and central air, new windows and plush carpeting throughout. 2 car attached garage. \$104,900. CALL CHARLOTTE JACUNSKI

Century 21
ROW
464-7111

Just Painted, PICTURE PERFECT!
3 bedroom, 1 1/2 bath home features newer furnace, new carpet family room, all ceramic tile kitchen, vinyl windows, marble sills, 4 calling fans, basement, garage. \$84,900. H-321-W. Call 348-6767. ERA COUNTRY RIDGE REALTY

LIVONIA SCHOOLS
Sharp 3 bedroom brick ranch with beautiful updated kitchen & bath, patio windows, central air, basement & garage. Prime area. \$82,900.

Century 21 TODAY!
662-9800

WESTLAND
A NEW COMMUNITY SINGLE FAMILY HOMES \$76,990 \$4800 MOVES YOU IN

Millpointe
595-1010

WESTLAND
Great location on this perfect starter with maintenance free exterior, 2 1/2 car garage, newer furnace, roof, water heater, hardwood floors, 2 1/2 baths, family room, well maintained home will not last long at \$49,900.

WESTLAND
Fussy buyer come on in. Three bedroom brick ranch, 2 baths, finished basement with wet bar, updated kitchen and 2 car garage. Mint condition, inside and out. \$51,500.

WESTLAND
Loads of cupboard in this family country kitchen, 4 bedrooms, 1 1/2 baths, family room with cozy fireplace, 2 car attached garage and full semi-finished basement. Newly landscaped, wooded area, close to schools. Call for more info! Only \$85,500.

316 Westland Garden City
LIVONIA SCHOOLS. Rialty sharp 3 bedroom ranch, newer windows and furnace. Lovely kitchen, full basement, much more. Asking \$71,900.

Century 21
ROW
464-7111

SUPER VALUE
3 bedroom aluminum ranch, hardwood floors, downspout to patio, nice court street. Walking distance to school, just \$34,900. Ask for Nancy

Century 21 DYNAMIC
728-8000
OR HER FAGER 610-0360

WESTLAND & AREA
Invest in happiness - outstanding 3 bedroom colonial, everything updated, move in condition, family room, fireplace, 1 1/2 baths, 2 car attached garage & finished basement. All appliances included \$95,900.

Century 21 - Dynamic
728-8000

WESTLAND
DON'T BE A POOL
Pick up that phone in your apartment when you're throwing rent down the drain, and see just how easy and with how little money you can get into this 3 bedroom brick ranch with a basement and 2 1/2 car garage. 474-5700

GARDEN CITY
SUMMER FUN
With an inground pool, 3 bedrooms, 2 1/2 baths, family room, there's central air, a finished basement, newer vinyl windows, and a 2 1/2 car garage. 421-5680

Westland
LIVONIA SCHOOLS
Opportunity knocks for this home near on the market. Cheerful brick ranch with finished basement, central air, 2 full baths, and garage. 421-5680

GORGEOUS
4 bedrooms and family room, Florida room, newer furnace and central air, new windows and plush carpeting throughout. 2 car attached garage. \$104,900. CALL CHARLOTTE JACUNSKI

Century 21
ROW
464-7111

Just Painted, PICTURE PERFECT!
3 bedroom, 1 1/2 bath home features newer furnace, new carpet family room, all ceramic tile kitchen, vinyl windows, marble sills, 4 calling fans, basement, garage. \$84,900. H-321-W. Call 348-6767. ERA COUNTRY RIDGE REALTY

LIVONIA SCHOOLS
Sharp 3 bedroom brick ranch with beautiful updated kitchen & bath, patio windows, central air, basement & garage. Prime area. \$82,900.

Century 21 TODAY!
662-9800

WESTLAND
A NEW COMMUNITY SINGLE FAMILY HOMES \$76,990 \$4800 MOVES YOU IN

Millpointe
595-1010

WESTLAND
Great location on this perfect starter with maintenance free exterior, 2 1/2 car garage, newer furnace, roof, water heater, hardwood floors, 2 1/2 baths, family room, well maintained home will not last long at \$49,900.

WESTLAND
Fussy buyer come on in. Three bedroom brick ranch, 2 baths, finished basement with wet bar, updated kitchen and 2 car garage. Mint condition, inside and out. \$51,500.

WESTLAND
Loads of cupboard in this family country kitchen, 4 bedrooms, 1 1/2 baths, family room with cozy fireplace, 2 car attached garage and full semi-finished basement. Newly landscaped, wooded area, close to schools. Call for more info! Only \$85,500.

The Michigan Group Realtors
591-9200

317 Redford
ANOTHER TEMPTING BUY!
Yard of 100' efficient compact kitchen, dining room opens to patio, three bedrooms upstairs, picture windowed living room. Priced at a modest \$47,900. F-151-E.R. Call 474-3303.

Century 21
ROW
464-7111

SUPER VALUE
3 bedroom aluminum ranch, hardwood floors, downspout to patio, nice court street. Walking distance to school, just \$34,900. Ask for Nancy

Century 21 DYNAMIC
728-8000
OR HER FAGER 610-0360

WESTLAND & AREA
Invest in happiness - outstanding 3 bedroom colonial, everything updated, move in condition, family room, fireplace, 1 1/2 baths, 2 car attached garage & finished basement. All appliances included \$95,900.

Century 21 - Dynamic
728-8000

WESTLAND
DON'T BE A POOL
Pick up that phone in your apartment when you're throwing rent down the drain, and see just how easy and with how little money you can get into this 3 bedroom brick ranch with a basement and 2 1/2 car garage. 474-5700

GARDEN CITY
SUMMER FUN
With an inground pool, 3 bedrooms, 2 1/2 baths, family room, there's central air, a finished basement, newer vinyl windows, and a 2 1/2 car garage. 421-5680

Westland
LIVONIA SCHOOLS
Opportunity knocks for this home near on the market. Cheerful brick ranch with finished basement, central air, 2 full baths, and garage. 421-5680

GORGEOUS
4 bedrooms and family room, Florida room, newer furnace and central air, new windows and plush carpeting throughout. 2 car attached garage. \$104,900. CALL CHARLOTTE JACUNSKI

Century 21
ROW
464-7111

Just Painted, PICTURE PERFECT!
3 bedroom, 1 1/2 bath home features newer furnace, new carpet family room, all ceramic tile kitchen, vinyl windows, marble sills, 4 calling fans, basement, garage. \$84,900. H-321-W. Call 348-6767. ERA COUNTRY RIDGE REALTY

LIVONIA SCHOOLS
Sharp 3 bedroom brick ranch with beautiful updated kitchen & bath, patio windows, central air, basement & garage. Prime area. \$82,900.

Century 21 TODAY!
662-9800

WESTLAND
A NEW COMMUNITY SINGLE FAMILY HOMES \$76,990 \$4800 MOVES YOU IN

Millpointe
595-1010

WESTLAND
Great location on this perfect starter with maintenance free exterior, 2 1/2 car garage, newer furnace, roof, water heater, hardwood floors, 2 1/2 baths, family room, well maintained home will not last long at \$49,900.

WESTLAND
Fussy buyer come on in. Three bedroom brick ranch, 2 baths, finished basement with wet bar, updated kitchen and 2 car garage. Mint condition, inside and out. \$51,500.

WESTLAND
Loads of cupboard in this family country kitchen, 4 bedrooms, 1 1/2 baths, family room with cozy fireplace, 2 car attached garage and full semi-finished basement. Newly landscaped, wooded area, close to schools. Call for more info! Only \$85,500.

The Michigan Group Realtors
591-9200

320 Homes Wayne County
SIMPLE ASSUMPTION
BRICK COLONIAL
REDFORD AREA. BEST BUY
No one else is looking at this most
condition colonial with natural fireplace
and formal dining room, finished
basement, 1 1/2 car garage, central
air. Only \$43,500.

John Marker
Century 21 Elite 522-7626

321 Livingston City.
HAMBURG TWP. - Lovely 4 bed-
room Dutch Colonial on almost one
acre in Ancharche. Call
Layson 313-486-4499

HOWELL - By Owner 3 bedroom,
1,800 sq. ft. ranch on 5 acres, 1,500
sq. ft. finished walkout, pond, 2 fire-
places, 1 1/2 baths, extra wide deck-
ing. \$189,900. Even. 1-517-548-3488

323 Homes Washenaw County
Ann Arbor
WESTWARD HO!
To the north Ann Arbor countryside
is this spacious 2 1/2 car garage
cottage ranch on 10 rolling acres. Rug-
ged 4 year old construction with
vaulted ceilings, abundance of oak
woodwork, massive stone fireplace,
3 baths, room for horses. Call
Fenton 313-471-6070 Even 973-7591
THE CHARLES REINHART CO.

324 Other Suburban Homes For Sale
FENTON: Lovely English Tudor,
Builders Home! 3,058 sq. ft. Out-
standing design includes sunny floor
living room & 3 car heated garage.
\$299,900. Arlene Schumley
RE/MAX METRO. 1-800-544-0776

326 Condos
BLOOMFIELD - 2 bedroom plus
den, dream kitchen, 2 car garage.
Landscape in unit. Pool & clubhouse.
\$125,000. BLOOMFIELD REALTY,
INC. 467-8080

CANTON: Townhouse, perfectionist's
dream - earthtones, bright,
clean, fresh - basement, carpet,
Furniture, \$78,900.
FARMINGTON: WYNSET traditional
townhouse, basement, garage, mas-
sive bath, colonial style crown
molding, location for walking. \$114,900.

One Way Realty
473-5500

FARMINGTON HILLS
A NEW COMMUNITY
NEW MODELS
\$114,990
2 bedrooms, 2 1/2 baths, 2 car at-
tached garage. Fireplace, central air,
private patio and much more.

GREENPOINTE
AT COPPER CREEK
553-4800

FARMINGTON HILLS
Assumable 8.5% mortgage on con-
do with 1500 sq. ft. secure desir-
able Woodcrest Village. Will de-
corate to suit. \$87,500. 646-2247

LIVONIA LAND CONTRACT \$48,900
More buy for the buck in this brick 2
bedroom townhouse style condo.
Private basement, and fresh decor.
Bargain terms. 421-5680

W. BLOOMFIELD
PERFECT ON PINE LAKE \$475,000
This quality built condo offers beau-
tifully landscaped maintenance free
extravagant 3 bedroom, 3 1/2 baths,
3 natural masonry fireplaces, a pro-
fessional landscaping, 2 car garage,
level 2 story cathedral ceilings. Ex-
clusive resort living without the
maintenance! 462-1680

The Prudential
Harry S. Wolfe,
REALTORS
Independently Owned and Operated

NORTHVILLE - 2 bedrooms, 2 1/2
baths, enclosed porch, attached 2
car garage, fireplace, full floor
finished basement. \$139,900. 313-486-5856

PLYMOUTH Walking distance of
downtown. 4 yrs. old, 2 bedrooms,
carport, fireplace, \$67,800.
237-5673 Even. 465-0185

N. ROYAL Oak - By owner, have to
move. 3 bedrooms, 2 1/2 baths, 2
bath, new carpet, central air and hot
water tank. \$35,000. 682-5149

WATERFORD TOWNHOUSE
Walk across street to golf course, 2
bedrooms, 1 1/2 baths, basement,
carport, 1,200 sq. ft. \$87,900.
Call Joyce Executive Properties
673-9204

WESTLAND - move in condition, 2
bedrooms, 2 1/2 baths, basement, full
finished basement, carpet, more.
\$84,500. 427-8622

WESTLAND - 2 bedroom, 2 1/2
bath, finished basement, air conditioning,
newly decorated, more. \$79,500.
326-6045

W. BLOOMFIELD - stylish contem-
porary has it all 3 bedroom, 2 1/2
bath, appliances, alarm, home, a
renty & more. Call: 685-7048

328 Duplexes Townhouses
LIVONIA: 2 Family, New roof, new
windows, siding, plumbing, electric,
bathrooms, kitchens, carpeting,
\$69,900. Metro West 261-3434

330 Apartments
DROVNER AREA, 16 units.
1 bedroom apartments, excellent
condition. \$465,000. Buyers only.
285-8228

332 Mobile Homes For Sale
BOSTONIAH: 2 bedroom, all appli-
ances, renovated clean with washer
& dryer. Low Rent! Must See!
Not a drive by. \$7550. 1-437-8713

CANTON - 1974 14X70, central air,
2 bedrooms, all appliances, large
living room, 55 and over communi-
ty. Good buy. 459-8027

DEAL OF THE WEEK - Large living
room & kitchen, 3 bedrooms,
dishwasher & appliances. Must see!
Only \$55,900. Call: 313-486-5438
HomeTown USA 595-0000

DOUBLE WIDE - NOVI AREA
4 bedrooms, 2 baths, washer/dryer,
possible 5 down. \$14,900. 255-9056

ESTATE SALE - New 2 bedroom 1 1/2
bath, excellent condition.
313-486-1536

FOUR MONTHS FREE RENT
14x70 mobile, 2 bedrooms, 1 1/2 bath.
Trailer must see \$6,000. 561-0441
After 5pm.

332 Mobile Homes For Sale
CANTON - 1985 Commodore Vanity,
14x70, 3 bedroom, 2 full baths, posi-
tioned laundry room, large kitchen.
Must See! Appraised at \$13,500.
Call for more info. \$10,500. Call
981-3785 or after 3:30pm. 397-2039

CENTURY 21 WEST
Mobile Homes For Sale

1991 28 x 60 \$46,000
1988 28 x 48 \$33,000
1987 28 x 52 \$45,000
1987 14 x 70 \$23,000
1989 14 x 70 \$22,900
1985 14 x 68 \$17,500
1987 26 x 52 \$49,900
1987 14 x 72 \$18,500
1985 14 x 70 \$17,900
1988 14 x 70 \$21,900
1988 14 x 70 \$27,000
1987 28 x 52 \$45,900
1980 14 x 70 \$15,500
FINANCING available, 10% down.

For more information, call:
CENTURY 21 WEST 349-8800
CLEARANCE MODEL SALE - 3 bed-
room, 2 baths, big closets, utility
room. Priced to sell. Won't last! E-2
financing. Call us for more informa-
tion: HomeTown USA 595-0000

HIGHLAND HILLS ESTATES
Novl/Farmington Area
New & Priced Mobile
Homes Available.

9 1/2 % Interest!
20% Down
15 Year Loan
Call Darlene

QUALITY HOMES
Call Joanne
474-0320 or 474-0333

HIGHLAND-1978 Festival 14x70, 2
bedroom, 2 bath, new roof, wood
shel, all appliances. Must see!
\$12,200.

NOVI MEADOWS
MOBILE HOME COMMUNITY
The New American Lifestyle

We have new and pre-owned homes
for sale. Home ownership for less
cost than most apartments.

Country Living
Beautiful Clubhouse
Play Areas
RV Storage
Call Darlene
Professional Management
Homes Priced From \$14,500

349-6966

RENT TO BUY
Farmington Hills
\$475/MO.
LITTLE VALLEY: 476-4079

SHELBY TOWNSHIP - 14x70, 2
bedroom, 2 bath, laundry room, all
appliances, must see. Please call.
Eves 567-7392.

333 Northern Party For Sale
CLARE COUNTY - Custom built
home on 3.2 acre lot. Maintenance free
Lakeland, Lakewood, Lake Access
Homes. For apt. Lakeside
Homebuilders. 313-624-1867

CLEAN, spacious 3 bedroom, 2 1/2
bath, full basement, new carpet, a/c,
5 wooded acres near Kalkaska.
Many custom features. \$96,000.
Call Ken Grabowski
REAL ESTATE ONE
616-947-9800
Eves/Springs 616-943-3742

HARBOR SPRINGS APARTMENT
Attracted 3 unit rental building in
downtown Harbor Springs central
business district - owners apart-
ment, must see! Rental \$199,000.
GRAHAM REAL ESTATE
(616) 526-6251

INDIAN RIVER, owner, Retirement
home on 1000 sq. ft. lot. Maintenance
free. \$68,000. 616-236-8738. P. O.
Box 345, Indian River, MI., 49749.

MUST SELL! - Mithaway lot
#1778, 55000 cash offer/agent.
Screened porch, screened pool,
lake. Furnished/unfurnished.
THE MICHIGAN GROUP
REALTORS INC., 591-9200

335 Time Share For Sale
TIME SHARING
RCI, 2 red weeks. Sleeps 6. Deeded.
702-594-0680

336 Southern Property
HOLIDAY FLORIDA N. Clearwater.
Clean 2 bedroom home, Florida
room, full bathroom, screened porch,
fenced, golfing, \$42,500 furnished.
Livonia 1-313-464-6567

STUART, FLORIDA - Hobe Sound,
Heritage Ridge Golf Community.
All offers invited. Call for details.
Home on cul-de-sac. 18th tee. 2 1/2
bedroom, convertible entertainment
center, den, 2 car garage, 14x35
screened porch, swimming pool,
lake. Furnished/unfurnished.
\$158,500 negotiable. Possible lease
with option. Owner. 313-486-6797
682-2600

337 Farms For Sale
SALINE - Six awesome acres with
contemporary & barn.

HOWELL - 21 acres w/3 bedroom
ranch. Gorgeous. Call for details.

HARTLAND - 15 acres, ranch, in-
door arena, 20 stalls & apt.

MILFORD - Five acres, barn & lovely
quid-level.

SOUTH LYON - 52 acres, custom
colonial & barn.

Call the HORSE FARM DIVISION
of ERA Layson at 313-486-4499 today

EMPLOYMENT

500 Help Wanted

PRESS PERSON - wanted for Waikiki print shop. multi press experience required. Also need part time or moon light bindery & press people. Call 521-2884

PRINTING PRESS OPERATOR Full/part time for expanding company. Experienced in All Dick/Roby 1-2 color. Benefits. 313-752-9864

PRODUCTION ASSEMBLY WORKERS - Daytona Hills area. \$5.75-\$6.95. Paces/Aftersn. Midlands. Long term. 648-2872

Norrell Services, Inc. TEMPORARY ASSIGNMENT NEVER A FEE

PRODUCTION EMPLOYEES - must have good coordination and previous production experience. 4450 Meridian, Sterling Heights, E. of Mound, N. of 19 Mile

PRODUCTION SUPERVISOR / PLANT MANAGER \$40,000 FEE PAID BY COMPANY. Stable non-automotive company needs minimum 5 years current quality control experience. Must be responsible for set-up and quality control. Call immediately. 399-3450. SNEDECOR PERSONNEL SERVICES

PROPERTY MANAGER - Large property management company seeks ambitious, organized individuals for Resident Manager positions at local apartment complexes. Great opportunity for advancement. Salary package includes apartment furnished. Property Manager, P.O. Box 5071, Southfield, MI, 48068.

PROTOTYPE TECHNICIAN Metal mold making experience. Journeyman journeyman stamping related experience. \$15.50/hour. Call DPR 443-0511

QUALITY CONTROL TECHNICIAN OEM facility in Novi has immediate opening for individual to assist in GRR and process capability studies, new part layout and gage layout. Must have 2+ years experience in mechanical technician or equivalent with experience in manufacturing environment and math, blueprint reading, and computer entry skills. Send resume and salary requirements to: Attn: N. Delaney Human Resources Dept.

MCINTOSH PRODUCTS, INC. 39600 Orchard Hill Place P.O. Box #8032 Novi, MI 48376-8032 An Equal Opportunity Employer

REAL ESTATE CAREER AMBITIOUS/CONSCIENTIOUS? We will train you! We want you on a long term high-income career. Call Julie Dudek, Westland Real Estate One 326-2000

RECEPTIONIST - for growing wholesale distributor. Must be experienced with multi line phones and computer. Located in Medical Center/Oakridge Hill area. Send resume or apply in person. Zakora Novelty Factory, 21300 Woodward Ave., Detroit, MI 48201

RECEPTIONIST - part time We will train you! Human Resources Society, 37255 Marquette, Westland.

RECEPTIONISTS NEEDED for Hair Salon, in Southfield, Call Evening & weekends hours. 588-2540 Slicker.

RECEPTIONIST for wild & crazy office. Start now. We train. Call Beth, 443-8590

RECEPTIONIST NEEDED Relating part time to your beauty salon. No students please. 890-1110

RECEPTIONIST NEEDED for hair salon. Farmington Hills. Part time. Please call Antonio or Judy. 626-8020

WEEKLY NEWSPAPER REPORTER needed. Full-time to report meetings, write stories, feature & other duties as requested. Smoke Free environment. Bachelors degree or 1-3 years experience. EOE. Send resume to: The South Lyon Herald, 101 N. Lafayette, South Lyon, MI 48178 No Phone Calls Please.

RESIDENTIAL STAFF Needed to work with adult clients with a closed head injury. Experience preferred. Reliable transportation required. Full or part-time positions available. Benefits for full-time employees. Please send resume or apply in person to: SERVICOR TRAPIST, INC. 33300 5 Mile Rd., Suite 201 Livonia, MI 48154

RESIDENTIAL WORKER/Advisor Part time for semi independent closed head injury facility. College student in human service field/psychology or previous experience required. Send resume to: PO Box 23064, Detroit, MI 48223

RESIDENT MANAGER Property Management company seeking energetic part-time manager to manage downtown Northville apartments. Required: successful past experience in leasing, supervising and managing luxury apartments. Computer knowledge desired. Salary and benefits commensurate with experience. Send resume to: Personal, P.O. Box 196, Birmingham, MI 48012-0196, Attn: Resident Manager

RETAIL CHAIN STORE DEPARTMENT MANAGERS To \$23,000 + benefits, 5 day week, 9-5:30 hours. Supervisory experience in mens, ladies, shoes or home furnishings. Send resume to: ASD ASSOCIATES AGY, 540-4130

RETAIL SALES PERSON for Men's Formal Wear Store in Livonia. Prefer men's clothing or formal wear experience. 474-1190

ROUGHING CREWS with excellent safety record. Send resume to box 2445, Livonia, 48151

ROUTE DRIVER - for metro area vending company. Must have good driving record. Good math skills. Understand the true meaning of customer service. Call our office for a brief phone interview between 10-12pm. 648-8324

SALES MANAGER Local retail office, part time of national franchise. Is seeking a local individual to manage their Northwestern Wayne County office. Call David at 513-360-9450

SEAMSTRESS (2) Experienced to work on Singer or straight to stitch machine. Birmingham location. Call, 645-9088

SECURITY OFFICERS Modern Livonia warehouse, 2 new production lines. Security guards and promotions can come fast. Must be available at shifts, but holding regular hours. Send resume to: Experience helpful. Telephone and/or necessary call or apply at: Tri-County Security, 2250 Woodland, Ferndale 48223

TELEMARKETER Experienced with pleasant voice. Hrs. flexible, part time, Plymouth/Ann Arbor area. Call, 425-7070 telemarketing

TEACHER NEEDED - For toddler program. Experience a must. No opportunity. Please call, 861-3830

TEACHER - part time, experienced with young children, degree in early childhood education. Oakland County, Computerized. 484-1778

\$10.00/HOUR Very successful, well established sales organization, in Southfield, seeks a salesperson with excellent communication skills. Full/Part time. 567-3000

TELEMARKETERS - needed to do survey for local doctor's office. Use your own phone. Birmingham and Troy area. 624-9100

TELEMARKETER Experienced with pleasant voice. Hrs. flexible, part time, Plymouth/Ann Arbor area. Call, 425-7070 telemarketing

TEACHER NEEDED - For toddler program. Experience a must. No opportunity. Please call, 861-3830

TEACHER - part time, experienced with young children, degree in early childhood education. Oakland County, Computerized. 484-1778

\$10.00/HOUR Very successful, well established sales organization, in Southfield, seeks a salesperson with excellent communication skills. Full/Part time. 567-3000

TELEMARKETERS - needed to do survey for local doctor's office. Use your own phone. Birmingham and Troy area. 624-9100

TELEMARKETER Experienced with pleasant voice. Hrs. flexible, part time, Plymouth/Ann Arbor area. Call, 425-7070 telemarketing

TEACHER NEEDED - For toddler program. Experience a must. No opportunity. Please call, 861-3830

TEACHER - part time, experienced with young children, degree in early childhood education. Oakland County, Computerized. 484-1778

\$10.00/HOUR Very successful, well established sales organization, in Southfield, seeks a salesperson with excellent communication skills. Full/Part time. 567-3000

TELEMARKETERS - needed to do survey for local doctor's office. Use your own phone. Birmingham and Troy area. 624-9100

TELEMARKETER Experienced with pleasant voice. Hrs. flexible, part time, Plymouth/Ann Arbor area. Call, 425-7070 telemarketing

500 Help Wanted

ROUTE DRIVERS For Suburban Detroit area. Good wages. You must have good people and reading skills. Also dependably, accurate transportation. No experience required. APPLY IN PERSON ONLY 32615 W. 9 Mile Rd. Farmington Hills, Wed. Only, from 10am-1pm

SALESPERSON Opening for car stereo & alarm sales. Good pay. Benefits. Apply Radio Shack, 14442 Michigan, Dearborn 48126 564-6880

SECURITIES COMPLIANCE PROFESSIONAL - Downtown Detroit N.Y.S.E. member brokerage firm is seeking a securities compliance candidate for a position in the compliance department. Responsibilities will include reviewing all securities and activities in accordance with various securities regulations and firm policies. Ideal candidate will have a degree in finance or business and previous compliance background. We offer a competitive salary and benefits package. Send resume in confidence to: Securities Compliance Professional for N.Y.S.E. Member, 443-2831

SEROS "THE BUSIEST RESTAURANT IN SOUTHFIELD" 29221 Northwestern Hwy. Has immediate waitress positions open for nights or 11-11:30 shift. Full or part time. Must have working, reliable people only. Apply in person or call Jim, 358-2353

SERVICE PERSONNEL Need person with mechanical ability to make repairs on all types of equipment. Must be able to take job sites. Experience preferred. Apply in person at Ford Window Co, 36850 Ford Road, Dearborn, 48124

SHEET METAL LAYOUT for small fabricating shop. All types of products, not duct work. Mfg welding a plus. Experienced only. Test given. Call for appointment. 442-2141

SHEET METAL MODEL MAKER Journeyman, prototype and vehicle build industrial R&D. Garden City, 32701 Industrial Rd. Garden City, 32701 No phone calls

SIDERS & SIDING CREWS wanted. Send resume to: Box 2445, Livonia, MI 48151

SILK SCREEN PRINTER Need experienced silk printer for small shop. Full or part time. Call between 9am-12 noon 589-1207

SOCIAL WORKER needed part time on M/W or F. Must have experience. Send resume to: 29429 Southfield Rd., Suite 1, Southfield, MI 48075, Attn: Kelly

SPRING/SUMMER HELP - \$8.50 to \$12.00 per hour. Must be 16 or older. Call for details. 36850 Ford Road, Dearborn, 48124

SPRINKLER INSTALLERS (non-experienced) Service Person (experienced) typing required. Send resume or apply in person. Call 465-9888

STOCK SALES, CASHIER positions available. Apply at: Oakland Hardware, 2775 Haggerty Road, Westland, MI 48186

STORE CLERKS ASSISTANT MANAGERS Full & Part-Time WANTED! Several outstanding people with retail experience. Great opportunity for increase in earnings and promotions. Please contact Manager 484-2831

HOP-IN 31401 W. 8 MILE RD. LIVONIA (313)477-8669

SUPERVISOR Needed for M/I Industrial site. Must have prior supervisory experience. Excellent company with Livonia and Westland locations. Call today for an interview. 425-9090

425-9090 BENCHMARK Temporary Help SURVEY RESEARCH TECHNICIANS

Flexible schedules available part time for "The Best & the Brightest" to work 10pm or 11pm during the week AND EITHER Sat. 9am-3pm OR Sun., 11am-5pm to do survey research interviews. Good environment. Excellent compensation and working conditions. PC experience and typing required. Send resume or letter of interest to: Market Strategies, 14099 Farmington Rd., Livonia, MI 48154. For more information call: Tues.-Fri. 261-9550

SWITCHBOARD OPERATOR 24-hour. Must be available to work 24 hours. Weekend hours available. Apply at: DMC Health Care Centers 41935 W. 12 Mile Rd. Novi, MI 48277 (located at 12 Mile and Novi Rd.)

SYSTEM ENGINEER BSBE with a minimum of 2 yrs. experience with PLC Logic & Control programs to be installed and debug of PLC Logic & Control Systems, supervisory installation and start-up of systems and customers. Send resumes to: 24462 Indevco, Farmington Hills, MI, 48333

SYSTEMS ENGINEER & TECHNICIAN Paint finishing, immediate openings, graduate Engineers & Technicians with 3 plus years experience. Positions include: Environmental source testing, field surveys/testing and safety. Full training provided. Send resumes to: Omega Productive Services, Inc., 1717 West Hamlin, Rochester Hills, MI, 48309

TRAVEL CONSULTANT Southfield area, minimum 2 years experience, 9am-5pm, 262-1560

TRAVEL/TOUR SALES We are seeking mature, responsible person to join an exciting, upbeat industry. Full training provided. Salary plus commission plus benefits. Apply in person to: CAN-AM Travel Co., 3000 Town Center, Southfield, MI

TRUCK DRIVER 3000 Town Center, Southfield, MI

TRUCK DRIVER 3000 Town Center, Southfield, MI

TRUCK DRIVER 3000 Town Center, Southfield, MI

TRUCK DRIVER 3000 Town Center, Southfield, MI

TRUCK DRIVER 3000 Town Center, Southfield, MI

TRUCK DRIVER 3000 Town Center, Southfield, MI

TRUCK DRIVER 3000 Town Center, Southfield, MI

TRUCK DRIVER 3000 Town Center, Southfield, MI

TRUCK DRIVER 3000 Town Center, Southfield, MI

TRUCK DRIVER 3000 Town Center, Southfield, MI

TRUCK DRIVER 3000 Town Center, Southfield, MI

TRUCK DRIVER 3000 Town Center, Southfield, MI

TRUCK DRIVER 3000 Town Center, Southfield, MI

TRUCK DRIVER 3000 Town Center, Southfield, MI

TRUCK DRIVER 3000 Town Center, Southfield, MI

TRUCK DRIVER 3000 Town Center, Southfield, MI

TRUCK DRIVER 3000 Town Center, Southfield, MI

TRUCK DRIVER 3000 Town Center, Southfield, MI

TRUCK DRIVER 3000 Town Center, Southfield, MI

TRUCK DRIVER 3000 Town Center, Southfield, MI

TRUCK DRIVER 3000 Town Center, Southfield, MI

500 Help Wanted

TECHNICIAN To serve as project leader on installation of fire protection systems. Specific background preferred, electrical background mandatory. Willing to travel. Send resume to: P.O. Box 188, Hazel Park, MI 48030

TELECOMMUNICATIONS \$70 BILLION INDUSTRY National company expanding into Southern Michigan seeks 6 years income opportunity. Training provided for those who qualify. Investment 827-9129

TELEMARKETER - Experienced only. Tired of broken promises? Call 721-7181. Tired of payrol problems? Call 721-7181. No selling.

TELEMARKETER - permanent part position evenings, experienced only. Salary plus production bonus. Call Mon. thru. Fri. 9 to 5. 851-2757

TELLER full time, with benefits. Call Mary Lee at Birmingham Teachers Credit Union 683-2920

TELLER Part Time Teller position at Northville & Sterling Heights branch. Candidate must have good math, clerical skills & public contact experience. Previous Teller experience required. Paid vacation & 401 K plan. Apply in person between 10am-3pm, Fri. 9 to 5.

TELLER PART TIME One of Michigan's leading savings institutions has positions available as follows: Livonia - 37077 W. 6 Mile Rd. E. of Newburgh Westland - 7205 Wayne Rd. at Warren

Positions offer public contact with excellent working conditions, competitive pay and paid training program. Candidate must have a good math aptitude and light typing skills. Good handling experience desirable. Apply in person Mon.-Fri., 10am - 2pm at: The First Federal Building corner Woodward Michigan, Personnel Department, 5th floor or 9:30am - 3:30pm at any convenient branch office location.

FIRST FEDERAL OF MICHIGAN 500 Woodward Ave. DETROIT, MI 48226 An Equal Opportunity Employer

TELLER SUPERVISOR Huntington Bank of Michigan is seeking a Teller Supervisor for our W. Bloomfield location. Qualified candidates will have a minimum of 1 yr. teller experience as well as previous supervisory experience. Candidates who meet these requirements should apply in person Mon., March 30 - Fri. April 3, between 9am-4pm at: Huntington Bank of Michigan Human Resources Department 801 W. Big Beaver Troy, MI 48068

THE GLAYMORE SHOP is seeking an experienced, part time sales professional for our Men's Store. Candidates must have strong product knowledge and sales experience with better quality merchandise. Call 462-7750

TOOL & DIE MAKERS and Machine Builders for growing company. High production plus excellent pay. Good benefits. Respond to: Spearhead Automated Systems, 41211 Vincennes Court, Novi 48275

TOP PAY!!! GENERAL LABOR IMMEDIATE OPENINGS Must have valid I.D., transportation, and be reliable. We offer TEMP/MED INSURANCE, HOURLY PAY, CASH BONUSES, OVERTIME PAY!!! Call for your appointment today. Livonia, 464-2100 Southfield, 352-1300

SNELLING TEMPORARIES NEVER A FEE TRANSPORTATION - Entry level position. Some transportation knowledge. Must be available during CRT & typing skills essential. 2nd & 3rd shift opening 24 hrs. 7 day a week operation. Forward resume to: APL Automotive, 17197 N. Laurel Park, Suite 200, Livonia, MI 48152 Equal Opportunity Employer M/F

TRAVEL AGENT growing travel agency in Troy seeking part time and full time agent. Minimum 2 years experience required. Excellent pay and commission to work with our team. Call Jim or Karen, 313-879-1533

TRAVEL AGENT - 2 years BSR experience. Troy/Rochester area. Send resume to: P.O. Box 205, Troy, MI 48069

TRAVEL CONSULTANT Southfield area, minimum 2 years experience, 9am-5pm, 262-1560

TRAVEL/TOUR SALES We are seeking mature, responsible person to join an exciting, upbeat industry. Full training provided. Salary plus commission plus benefits. Apply in person to: CAN-AM Travel Co., 3000 Town Center, Southfield, MI

TRUCK DRIVER 3000 Town Center, Southfield, MI

TRUCK DRIVER 3000 Town Center, Southfield, MI

TRUCK DRIVER 3000 Town Center, Southfield, MI

TRUCK DRIVER 3000 Town Center, Southfield, MI

TRUCK DRIVER 3000 Town Center, Southfield, MI

TRUCK DRIVER 3000 Town Center, Southfield, MI

TRUCK DRIVER 3000 Town Center, Southfield, MI

TRUCK DRIVER 3000 Town Center, Southfield, MI

TRUCK DRIVER 3000 Town Center, Southfield, MI

TRUCK DRIVER 3000 Town Center, Southfield, MI

TRUCK DRIVER 3000 Town Center, Southfield, MI

TRUCK DRIVER 3000 Town Center, Southfield, MI

TRUCK DRIVER 3000 Town Center, Southfield, MI

TRUCK DRIVER 3000 Town Center, Southfield, MI

TRUCK DRIVER 3000 Town Center, Southfield, MI

TRUCK DRIVER 3000 Town Center, Southfield, MI

TRUCK DRIVER 3000 Town Center, Southfield, MI

TRUCK DRIVER 3000 Town Center, Southfield, MI

TRUCK DRIVER 3000 Town Center, Southfield, MI

TRUCK DRIVER 3000 Town Center, Southfield, MI

TRUCK DRIVER 3000 Town Center, Southfield, MI

TRUCK DRIVER 3000 Town Center, Southfield, MI

TRUCK DRIVER 3000 Town Center, Southfield, MI

TRUCK DRIVER 3000 Town Center, Southfield, MI

TRUCK DRIVER 3000 Town Center, Southfield, MI

TRUCK DRIVER 3000 Town Center, Southfield, MI

500 Help Wanted

TREE/SHRUB CARE TECHNICIAN Experienced person needed for expanding Tree/Shrub Department. State of Michigan Pesticide Application Certification required. Apply at: D & B LANDSCAPING 17278 BURGESS DETROIT, MI 48219 (313)634-5519

TRUCK DRIVER Full time position, delivering & handling building materials. Must have chauffeur license & a good driving record. Will accept only applications from persons looking for a future in the building materials business. Excellent benefits. High school graduate. Excellent benefits. Apply in person at: Wimsatt Building Materials, 36340 Van Born, Wayne, MI

TUXEDO RENTAL WAREHOUSE in Livonia accepting applications for full and part time Pressers, Drivers, Office, Seamstress (M/F), General Stock Room. 474-1190

WHEELCHAIR TECHNICIAN Specialty Wheelchair Modifications. Install custom made wheelchair. Upholstering of standard wood & foam seating systems. Basic carpentry & electrical wiring experience required. Must be able to operate sewing machine, power tools & other hand tools. Send resume to: Michael Hart, Adaptive Wheelchairs, 21555 Woodward, Farmington Hills, MI 48334. Equal Employment Opportunity Affirmative Action.

WINDOW WASHER - experienced. For new & residential construction. Must have own transportation. Good wages. 357-4463

502 Help Wanted Dental-Medical ASSISTANT ACTIVITIES DIRECTOR Progressive nursing facility looking for creative, energetic person, duties to include organizing field trips, directing arts & crafts & similar jobs. Veno Continued Care Center 3999 S. Veno, Wayne. 328-6600

ASSISTANT MEDICAL Looking for top-notch assistant for busy medical office. Must be hard-working individual. Starting salary \$7.25/hour and higher, according to experience. N.A.A.-783-4783

BILLERS \$9-\$11/hr. New openings! Must have DME, Psych, IV infusion, Ophthalmology, or Physician office billing experience. Excellent benefits, training, & bonus incentives. Contact: Patty Reitz, HANER ASSOCIATES, 2970 Middlebelt Farmington Hills, MI 48334

BUS HELP - Day & night positions open. Part time. Will train experienced chauffeur. 363-3490 Northville, Rd., Northville, MI 48161

CATH LAB TECHNICIAN - experienced only need apply. Excellent salary & benefits. Northern Oakland County. Send resume to: Observer & Electronic Newspapers 36251 Schoolcraft Rd. Livonia MI 48150

CERTIFIED NURSING ASSISTANT CHARTER HOUSE OF NOVI A dynamic, quality long term care facility at its best long offering: • Premium start salary for new graduates • Health, Dental and Life Insurance • Tuition reimbursement

WHY NOT WORK FOR THE BEST! Contact: NORA SPIRO 477-2000

CHAIRSIDE ASSISTANT - mature, dedicated. Unique opportunity, quality practice. Redford/Dearborn Heights area. Call 462-7750

CHIROPRACTIC RECEPTIONIST Energetic, enthusiastic, & organized individual wanted for growing Oak Park practice. Computer & digital skills required. Call 462-8400

COOKS for Paddy's Pub. Flexible hours. Great working conditions. Apply in person, manager, 1809 N. Wayne Rd., Westland, 372-5330

EXPERIENCED DENTAL OFFICE We are planning ahead for some great assignments in Farmington, Livonia, Canton, Dearborn, Southfield, Bloomfield, Royal Oak. • Assistants • Hygienists • Office Staff • Receptionists • FRONT OFFICERS. (313) 477-5777 Dental Career Alternative. An Equal Opportunity Employer

DENTAL ASSISTANT For friendly family preventive practice emphasizing quality & Excellence. Flexible hrs. Wage/Benefits commensurate with experience. CDA or equivalent experience. Northville. 348-4210

DENTAL ASSISTANT, full time, for progressive dental office in Livonia area. Experience necessary. Salary commensurate with ability. 525-1200

DENTAL ASSISTANT - PART TIME for Rochester office. Great hours, experience necessary. 482-2288

DENTAL ASSISTANT/RECEPTIONIST Experience preferred, full time, Farmington. 478-4816

DENTAL ASSISTANT/Chairside 4 handed dentistry. Experienced. High salary, high quality practice. Excellent opportunity. 353-5111

DENTAL ASSISTANT Full time, mature, experienced offering friendly, family practice in Livonia. 644-3430

DENTAL CLAIMS PROCESSOR Growing dental office seeks experienced team processor with at least 2 yrs. actual working experience. Must be able to read X-Rays & have industry full training provided. Salary & communication skills. Excellent salary & benefits offered. Please send resume to: Claims/Personnel 2000 Town Center, Ste. 2200 Southfield, MI 48075 An Equal Opportunity Employer

DENTAL HYGIENIST - Saturdays - 4 hours. Great pay. Fun modern office in Midtown. 484-1900

DENTAL HYGIENIST Full time, no Saturdays. 484-8996

DEMMEER FORD DEMMEER FORD

'91 TAURUS "SHO"
Ford Company Cars, 4 to choose, loaded, starting from
\$13,991


'91 FORD CLUB WAGON XL
Air, automatic, 8 passenger, 10,000 miles. "Ford Company Van."
\$11,495

'91 RANGER STX 4X4
V-6, 5 speed, air, lite bar, loaded.
\$10,991

'91 CAPRI XR2
5000 miles, loaded. "Hard Top" Ford Company Car.
\$13,991

JACK DEMMEER FORD

37300 Michigan Avenue
at Newburgh Road • Wayne



721-6560 **721-2600**

'91 PROBE GL
Air, premium sound, convenience group, loaded. "Ford Motor Company Car."
\$8991

'92 CROWN VICTORIA LX
Leather, anti-lock brakes, traction control, JBL dual exhaust, handling & performance package. "Ford Motor Company"
\$17,991

'90 AEROSTAR 4X4 XL WAGON
Power windows, locks, air, cruise, tilt, 7 passenger, tu-tone paint, 16,000 miles.
\$13,990

'91 T-BIRD
Power windows, locks, seat, air, cruise, stereo, tilt, loaded, 2 to choose, both with "V8 5.0 Liter Engine."
\$12,991

'91 T-BIRD "Super Coupe"
Automatic, keyless entry, power moonroof, loaded. "Ford Motor Company Car."
\$16,991

'91 MARK VII "LSC"
Leather, CD, alarm, loaded, 1500 miles. "Ford Motor Company Car."
Was \$32,232
Is **\$23,991**

'91 PROBE LX
V-6, auto, air, leather, loaded.
\$10,991

DEMMEER FORD DEMMEER FORD

Our entire \$3,000,000 INVENTORY will be on sale!!

UP TO \$3000 OFF!

1992 ECLIPSE

overdrive transmission, pw. steering, AM/FM stereo, reclining bucket seats, remote mirrors, wheel covers, full carpeting & more.

BUY FOR \$9999* **LEASE FOR \$149** MO.**

1992 MITSUBISHI GALANT
Air/condition, rear defogger, AM/FM stereo, reclining buckets, styled wheels, fold down rear seat & more.
\$10,995* **\$179** per mo.**



'92 DIAMANTE
V6, auto., AM/FM stereo cass., cruise, tilt, pw. windows & door locks & much more!
\$19,899*



'92 3000GT SL
5 spd., ABS, A/C, air bag, pw. str., pw. brakes, ster. cass., rear spoiler, cruise, tilt, pw. wind/dr locks, more.
\$24,700*



USED CAR SALE SPECTACULAR!

1991 Factory Official's GALANT LS'S Loaded. \$12,500	1990 Factory Official's GSX ECLIPSE'S \$12,900	1989 ACURA LEGEND Low miles, loaded. \$16,500	1990 VW CORRADO Low miles, Bright yellow. \$11,995	1989 DODGE DAYTONA ES One owner, extra sharp. \$7495
1989 PONTIAC GRAND AM Low miles, loaded, quad. \$7995	1989 HONDA ACCORD LX Automatic, loaded. \$9995	1989 PONTIAC GRAND PRIX One owner, like new. \$7995	1989 NISSAN PULSAR Automatic. SAVE \$7995	1989 TOYOTA CELICA Automatic, air, low miles. \$8995

*Plus tax, title & destination. **Closed end lease for qualified customers. Leased payments based on 60 mos. 5000 down plus \$1000 per month. \$500 security deposit. 75,000 mile limitation. 10¢ per mile over 75,000 mi. per mo. See us for details on purchase vehicle at lease end, but lease payments subject to prior approval. To get total payments multiply by 60. Lease subject to FV, use tax.

Michigan's #1 Dealer
353-0910

Motors **MITSUBISHI SOUTHFIELD**

29310 TELEGRAPH ROAD, JUST NORTH OF 12 MILE, SOUTHFIELD

QC1 AVIS FORD QC1

CHAIRMAN AWARD WINNER

\$ WHAT DO A, X AND Z PLAN BUYERS WANT? \$

THEY WANT MORE MONEY FOR THEIR TRADE-INS A Lot More Money

AVIS GIVES

\$500⁰⁰

More For Every A, X and Z Plan Trade-In

<p>NEW '92 ESCORT LX 4 DOOR WAGON</p> <p>\$500 REBATE</p>  <p>Power steering, power brakes, tinted glass, rear window defroster, air, light group, cassette, AM/FM stereo, child safety locks, reclining bucket seats, interval wipers. Stock #2928.</p> <p>WAS \$11,949 \$9166*</p> <p>YOUR A PLAN PRICE IS</p>	<p>NEW '92 TEMPO GL 4 DOOR SEDAN</p> <p>\$500 REBATE</p>  <p>Air, light group, power steering, power brakes, tinted glass, dual electric control mirrors, tilt wheel, center armrest, rear window defroster, floor mats, power lock group, electric AM/FM stereo cassette/clock, polycast wheels, automatic transaxle, deck lid luggage rack, body side moldings, console, illumination, dual visor mirrors, luxury sound insulation, interval wipers. Stock #2309.</p> <p>WAS \$13,247 \$9497*</p> <p>YOUR A PLAN PRICE IS</p>	<p>NEW '92 ESCORT GT</p> <p>\$750 REBATE</p>  <p>Power steering, disc brakes, tinted glass, AM/FM stereo cassette, rear window defroster, air, luxury convenience group, tilt steering, speed control, tachometer, premium sound system, fog lamps, styled aluminum wheels. Stock #1798.</p> <p>WAS \$13,682 \$10,209*</p> <p>YOUR A PLAN PRICE IS</p>
<p>NEW '92 PROBE GL 2 DOOR</p> <p>\$1500 REBATE</p>  <p>Air, tilt wheel, instrument cluster column, rear window defroster, dual illuminated visor mirrors, tinted glass, convenience group I, power steering, power brakes, moldings, cargo cover, console, side window demister, performance instrumentation cluster, interval wipers. Stock #2399.</p> <p>WAS \$14,584 \$10,508*</p> <p>YOUR A PLAN PRICE IS</p>	<p>NEW '92 TAURUS L 4 DOOR SEDAN</p> <p>\$500 REBATE</p>  <p>Power steering, power brakes, tinted glass, automatic, air-rear window defroster, exterior accent group, airbag, AM/FM stereo, tilt steering, instrumentation, interval wipers, child safety lock. Stock #2798.</p> <p>WAS \$16,481 \$12,626*</p> <p>YOUR A PLAN PRICE IS</p>	<p>NEW '92 AEROSTAR XL PLUS WAGON</p> <p>\$1,000 REBATE</p>  <p>7 passenger with dual captain's chairs, XL trim, power steering, power brakes, tinted glass, air, automatic, privacy glass, speed control, tilt steering, clearcoat paint, rear window defroster, AM/FM stereo cassette, luggage rack, airbag, courtesy lights, super cooling. Stock #26261.</p> <p>WAS \$18,367 \$13,053*</p> <p>YOUR A PLAN PRICE IS</p>

\$ Have Your Trade-In Appraised at AVIS Before You Buy! \$



FREE TANK OF GAS with every new vehicle purchase from stock.

*A Plan price plus tax, title, and destination. Rebate in cash.

SALE ENDS 4-3-92

Avis Ford

The Dealership With A Heart

TELEGRAPH RD. Just North of 12 MILE RD., SOUTHFIELD
OPEN MON. & THURS. 'TIL 9 P.M.

CALL
1-800-358-AVIS
or
355-7500